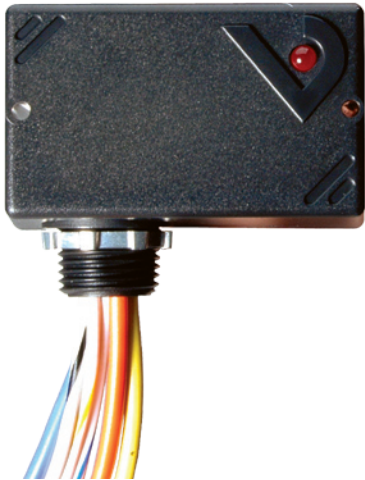


V120



V120

20A SPDT Enclosed Relay

Installer's Specifications

| | |
|-----------------------------|--|
| Operating Temperature | -34°C to 55°C (-29° to 131°F) |
| Operating Humidity | 10-90% non condensing |
| Expected Relay Life | Electrical (at rated current): 100,000 cycles Mechanical (unpowered): 10,000,000 cycles |
| Relay Status | LED ON=energized |
| Wire Specifications: | |
| Lead Length | 14" (356mm) min. |
| Gauge | UL1015; Coil: 18AWG; Contacts: 16AWG |
| Insulation Class | 600VAC RMS |
| Agency Approvals | UL508 enclosed device listing |



QUICK INSTALL

Disconnect and lock out all power sources before beginning the installation.

- Using the threaded nipple, connect the V120 to the desired enclosure through a knock out.
- Secure with the conduit nut provided.
- Connect Coil:
 - Choose the coil common lead (white with yellow stripe) and connect it to the (-) source termination point.
 - Choose either the low voltage (24VAC/DC, white with blue stripe) or high voltage (120VAC, white with black stripe) lead, depending on the application requirements, and connect it to the (+) source termination point.*
- Connect Relay Contacts:
 - Choose the relay common wire (yellow) and connect to switched load.
 - Choose the relay N.O. (orange) and/or* N.C. (blue) lead and connect to switched load.
- Secure your enclosure and reconnect power.

*Wires that are not terminated must be isolated or insulated, i.e. wire nut.

⚠ DANGER ⚡

HAZARD OF ELECTRIC SHOCK, EXPLOSION, OR ARC FLASH

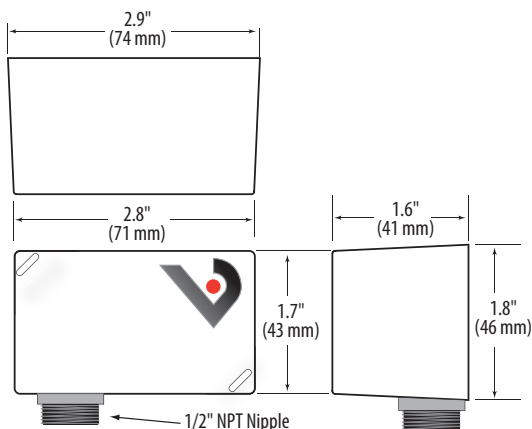
- Follow safe electrical work practices. See NFPA 70E in the USA, or applicable local codes.
- This equipment must only be installed and serviced by qualified electrical personnel.
- Read, understand and follow the instructions before installing this product.
- Turn off all power supplying equipment before working on or inside the equipment.
- Use a properly rated voltage sensing device to confirm power is off.
DO NOT DEPEND ON THIS PRODUCT FOR VOLTAGE INDICATION
- Only install this product on insulated conductors.

Failure to follow these instructions will result in death or serious injury.

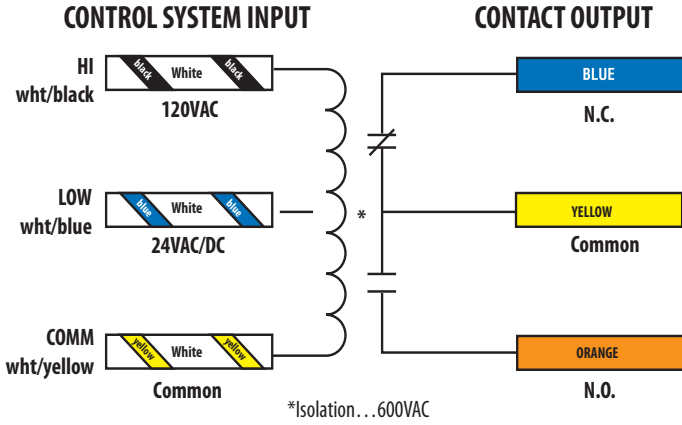
NOTICE

- This product is not intended for life or safety applications.
- Do not install this product in hazardous or classified locations.
- The installer is responsible for conformance to all applicable codes.
- Mount this product inside a suitable fire and electrical enclosure.

DIMENSIONS

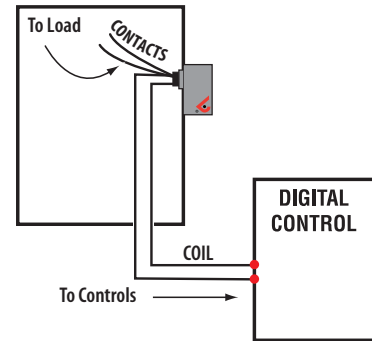


WIRING COLOR CODES



WIRING EXAMPLE

Nipple mount directly to a panel



CONTACT AND COIL SPECIFICATIONS

| TYPICAL COIL PERFORMANCE | | |
|--------------------------|------|---------|
| Voltage | Coil | Current |
| | AC | DC |
| 24V..... | 75mA | 32mA |
| 120V..... | 42mA | - |

| CONTACT RATINGS | |
|-----------------|--------------------------------------|
| Resistive..... | 20A@277VAC, 28VDC |
| Motor..... | 120VAC, 1HP 277VAC, 2HP |
| Pilot Duty..... | A300 |
| Ballast..... | 277VAC, 20A N.O. 277VAC, 10A N.C. |
| Tungsten..... | 120VAC, 10A N.O. 120VAC, 2A N.C. |

Nipple mount to 4x electrical box

