

INSTALLATION

!CAUTION! - This product is not intended for life or safety applications

Severe injury or death can result from electrical shock during contact with high voltage conductors or related equipment. Disconnect and lock-out all power sources during installation. Applications shown are suggested means of installing relays, but it is the responsibility of the installer to ensure that the installation is in compliance with all national and local codes. Installation should be attempted only by individuals familiar with codes, standards, and proper safety procedures for high-voltage installations. Do not rely on status indications of device exclusively to determine of power is present in conductor.

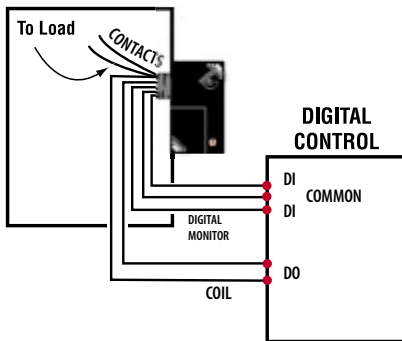
Ensure load and coil source are shut off and locked out before any installation

- Using the threaded nipple connect the V103 to the desired enclosure through a knock out.
- Secure with the conduit nut provided.
- Connect Coil:
 - Choose the coil common lead (White with Yellow Stripe) and connect it to the (-) source termination point.
 - Choose either the low (10-30VAC/DC White w/blue stripe) or high (120VAC White w/black stripe) voltage lead whichever fits your application, and connect it to the (+) source termination point.*
- Connect Relay Contacts:
 - Choose the two solid orange wires (N.O. Contact) and connect them to your switched load.
- Connect Digital HOA Monitor:
 - Choose the brown and grey wires and take them to two different digital inputs referencing the violet wire as common.
- Secure your enclosure and reconnect power.

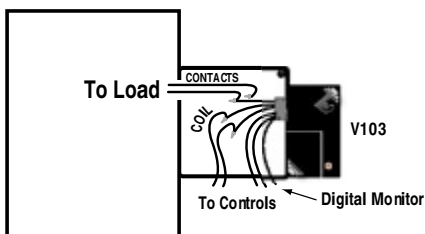
*Wires which are not terminated must be isolated or insulated, i.e. wire nut.

WIRING EXAMPLES

Nipple mount directly to a panel



Nipple mount to any 2x or 4x electrical box



Installation Instructions

Victory 103

10A SPST Enclosed Relay with HOA Switch

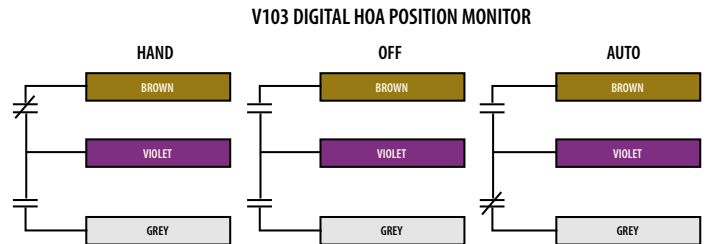
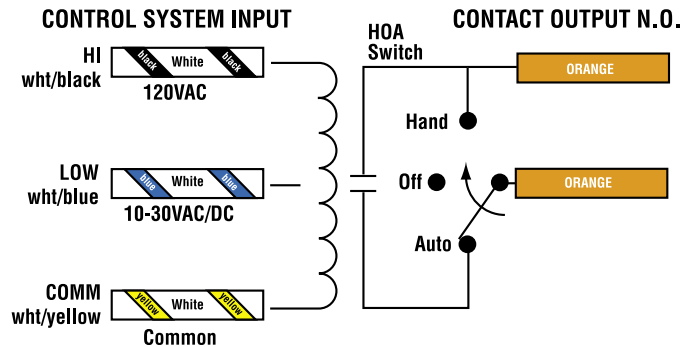
VERIS INDUSTRIES



PORTLAND, OREGON USA
 (503) 598-4564 FAX (503) 598-4664
 1-800-354-8556

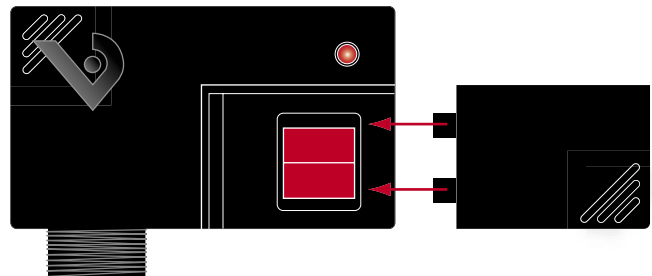
http://www.veris.com email:sales@veris.com

WIRE COLORS



Switch Positions:
 HAND = Brown wire closed to Common
 OFF = Both wires open to Common
 AUTO = Grey wire closed to Common

HOA POSITIONS



HAND — When the switch is in the up position, the contacts are closed.
OFF — When the switch is in the middle position, the contacts are open.
AUTO — When the switch is in the down position, the control system actuates the contacts.

SPECIFICATIONS

General

Operating Temp..... -40° to 55°C
 Operating Humidity 0-95% non condensing
 Expected Relay Life 10 million cycles min. mechanical
 Relay Status LED ON=relay coil energized
 Dimensions..... 4.0"(L) x 2.04"(W) x 2.50"(H)
 3/4" NPT nipple

Digital Monitor Maximums

Dry Circuit Contact Rating (max).....24VAC/DC@100mA

TYPICAL COIL PERFORMANCE		
Coil Voltage 10-30VAC/DC, 120VAC		
Pull In Voltage	AC	DC
10-30V.....	8	9
120V.....	78	
Drop Out Voltage	AC	DC
10-30V.....	2	3
120V.....	18	
Voltage	Coil Current	
	AC	DC
10V.....	25mA.....	14mA
24V.....	31mA.....	16mA
30V.....	39mA.....	18mA
120V.....	22mA	—

CONTACT RATINGS	
Resistive.....	10A(r)@277VAC
Motor.....	1/3 HP@240VAC N.O. 1/6 HP@240VAC N.C.
Gold Flash...	Yes