

Current Transducers with Relay: 4-20mA Analog Output

Load Trending And Control Relay
In One Package

APPLICATIONS

- Load trending
- Motor control
- Positive proof of flow

FEATURES

Loop-powered analog current sensor with integral start/stop command relay

- Reduces the number of installed components...saves time and space
- Self-gripping split-core for fast retrofit installation...no need to remove conductor
- One device to install for start/stop & status...reduces installation charges
- Power the current sensor and receive the 4-20mA signal with only two wires... fewer wires required than with traditional 3-wire sensors

Selectable factory calibrated ranges up to 120A for increased flexibility and resolution

- Factory calibrated switch-selectable ranges (30/60/120A) for high resolution and installation ease
- No jumpers on unit...reduce installation error
- Removable mounting bracket for installation flexibility
- Bracket can be installed in three different configurations...added flexibility
- Command relay switches up to 5A@250VAC
- 5-year limited warranty

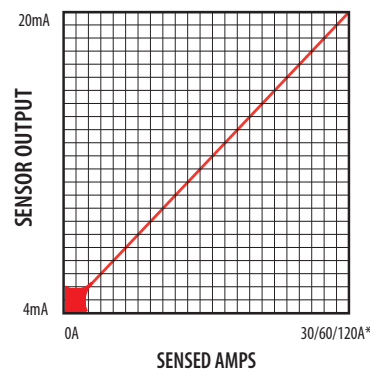


DESCRIPTION

The Hawkeye 931/951 provide accurate load trending information with a proportional 4-20mA output signal. These devices offer three amperage ranges for versatility, with easy slide-switch selection. The command relay is fully integrated in the device, but it is isolated from the current sensor. This combination makes these products ideal for start/stop control and status monitoring of motors, using one device instead of two.

H931/951 LINEAR OUTPUT

Scale software as shown



*Factory calibrated ranges selected with the amperage range switch

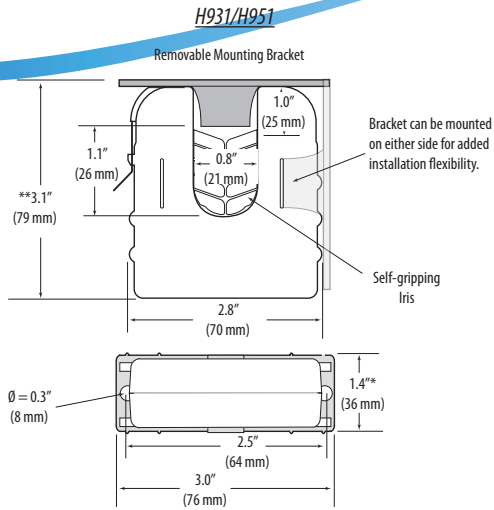
SPECIFICATIONS

Sensor Power	30mA (max.)@12-30VDC
Insulation Class	600VAC RMS
Frequency Range	50/60Hz
Temperature Range	-15° to 60°C (5° to 140°F)
Humidity Range	10 - 90% RH, non-condensing
Accuracy	±2% full scale from 10% to 100% (selected range)
Response Time	2 sec.
Terminal Block Maximum Wire Size	14 AWG
Terminal Block Torque (nominal)	4 in.-lbs (0.45 N-m)

UL 508 open device listing
Do not use LED status indicators as evidence of applied voltage

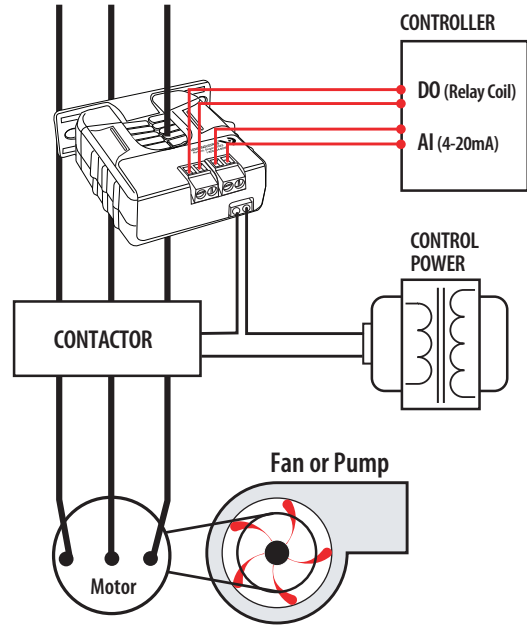
DIMENSIONAL DRAWING

APPLICATION/WIRING DIAGRAM



*Terminal block may extend up to 1/8"; slide switch may extend up to 1/4" over the height dimensions shown.

Trending & Controlling Motor Loads with the Hawkeye 931



RELAY CONTACT RATINGS (N.O.)

Resistive..... 5A(r)@250VAC
5A(r)@30VDC

Inductive..... 2A(r)@250VAC
2A(r)@30VDC

TYPICAL COIL PERFORMANCE

Voltage	AC	DC
24	15	15
12		20
Pull In Voltage (H951 only)		
12VDC		8.4VDC
Drop Out Voltage (H951 only)		
12VDC		3.0VDC

ORDERING INFORMATION



MODEL	AMPERAGE RANGE	SENSOR OUTPUT	RELAY TYPE	RELAY COIL	RELAY	RELAY POWER LED	UL
H931	0 - 30/60/120A	4 - 20mA	SPST, N.O.	24VAC/DC	●	●	●
H951				12VDC nom.	●	●	●

ACCESSORIES

DIN Rail Clip Set (AH01)
DIN Rail (AV01) and DIN Stop Clip (AV02)