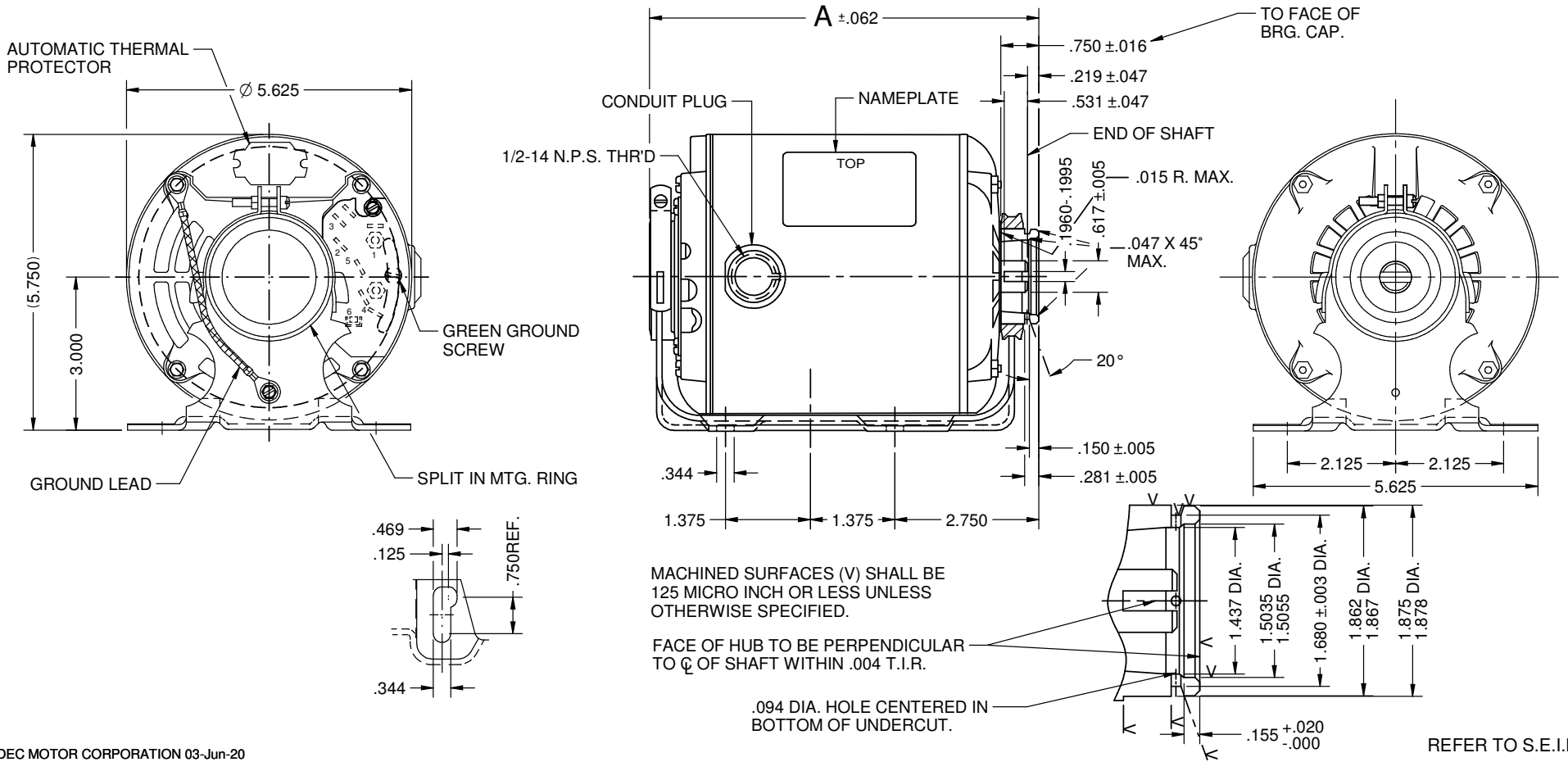


| VAR | MODEL | CUSTOMER | CAT.NO. | A | HP | VOLTS | SF | AMPS | HZ | RPM | PROTECTOR | ROTATION | DESCRIPTION/REMARKS |
|-----|---------------|--------------------------|---------|-------|-----|---------|-----|------------------|-------|-----------|-----------|------------------|---|
| 001 | S55CXPNA-7672 | WHOLESALE- FLUID SYSTEMS | 872 | 9.690 | 3/4 | 115/230 | 1.0 | 10.0/4.9/9.8/4.9 | 50/60 | 1725/1425 | AUTOMATIC | CCW LEAD END REV | S55, RES. MTD, BALL BRG, OPEN ALL ANGLE |
| | | | | | | | | | | | | | |
| | | | | | | | | | | | | | |
| | | | | | | | | | | | | | |



NIDEC MOTOR CORPORATION 03-Jun-20

REFER TO S.E.I.M. 24-1

| REVISION RECORD FOR: | | TOLERANCES ON DIMENSIONS (UNLESS OTHERWISE SPECIFIED) | | NIDEC MOTOR CORPORATION | | | REVISION DATE: | |
|-------------------------|--|---|--|--|--|--|----------------|--|
| JC 74070 | | | | INFORMATION DISCLOSED ON THIS DOCUMENT IS CONSIDERED PROPRIETARY AND SHALL NOT BE REPRODUCED OR DISCLOSED WITHOUT WRITTEN CONSENT OF NIDEC MOTOR CORPORATION | | | 03-JUN-20 | |
| NEW DRAWING. | | | | TITLE | | | REV | |
| | | | | CUSTOMER DETAIL DRAWING | | | SHEET NUMBER | |
| ISSUED BY: O. CASTANEDA | | ENGINEER APPROVED: J. MENDOZA | | CODE | | | DWG SIZE | |
| | | | | V02 | | | B | |
| | | | | ITEM NO. | | | 1 OF 4 | |
| | | | | 833214 | | | | |