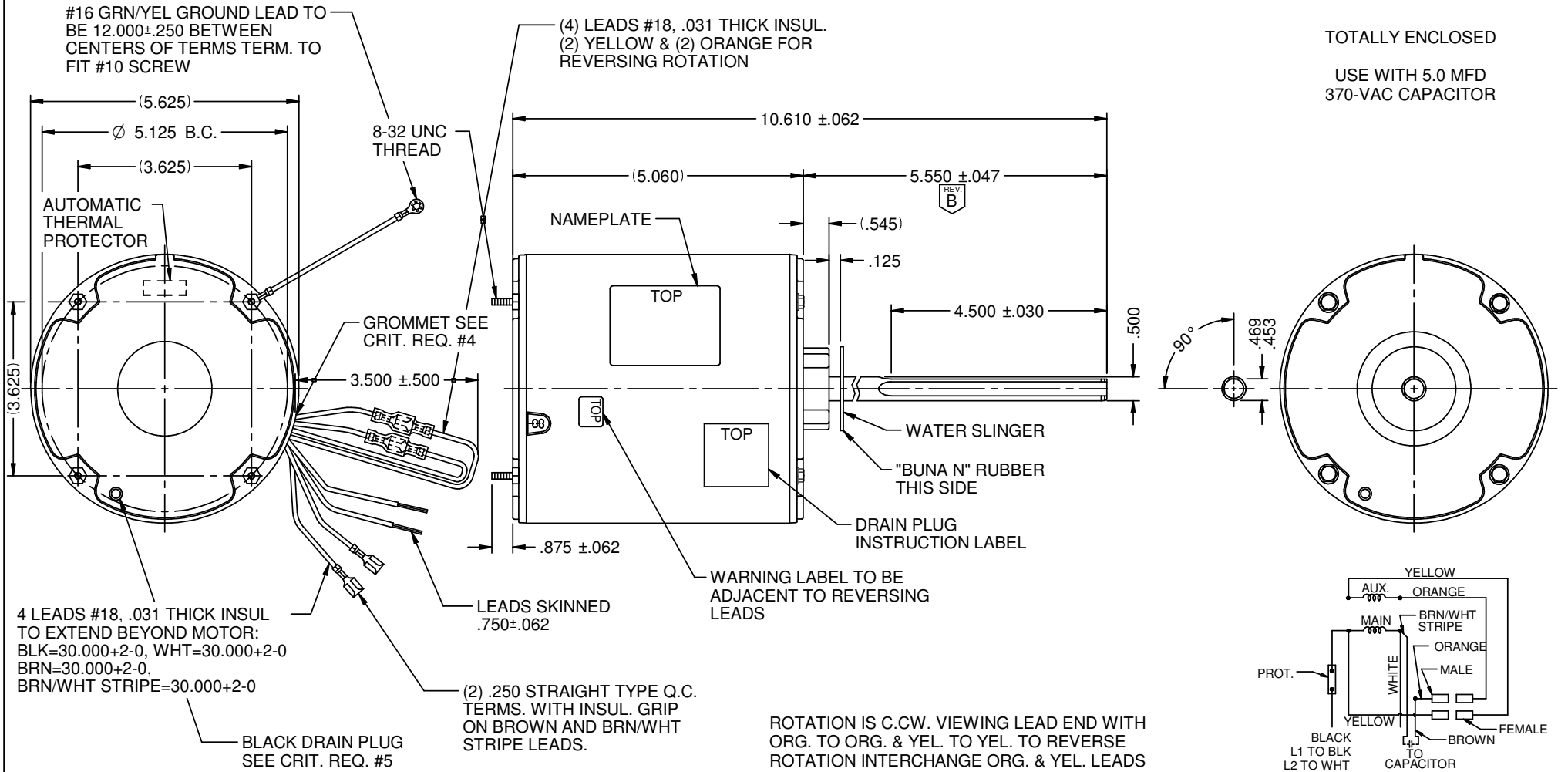


MODEL	REF	CUSTOMER	HP	VOLTS	AMPS	HZ	RPM	ROTATION	CUSTOMER PT. NO.	DESCRIPTION / REMARKS
K55HXTFS-8717	---	STANDARD	1/2	208-230	3.0	60	1625	C.CW LEAD END REV.	1892	K55 ENCLOSED STUD MTD. SLV BRG.



NIDEC MOTOR CORPORATION 29-Jul-19

REVISION RECORD FOR:		ECO E34980
CHANGED SHAFT DIMENSION TO 5.550		
ISSUED BY:	E. GONZALEZ	ENGINEER APPROVED: M. DE LEON

DIMENSIONS ARE FOR REFERENCE ONLY

UNLESS TOLERANCE IS SPECIFIED

NIDEC MOTOR CORPORATION			
INFORMATION DISCLOSED ON THIS DOCUMENT IS CONSIDERED PROPRIETARY AND SHALL NOT BE REPRODUCED OR DISCLOSED WITHOUT WRITTEN CONSENT OF NIDEC MOTOR CORPORATION			REVISION DATE: 29-JUL-19
TITLE	CODE	ITEM NO.	REV
CUSTOMER DETAIL DRAWING	V02	824953	B
SHEET NUMBER		DWG SIZE	
1 OF 3		B	