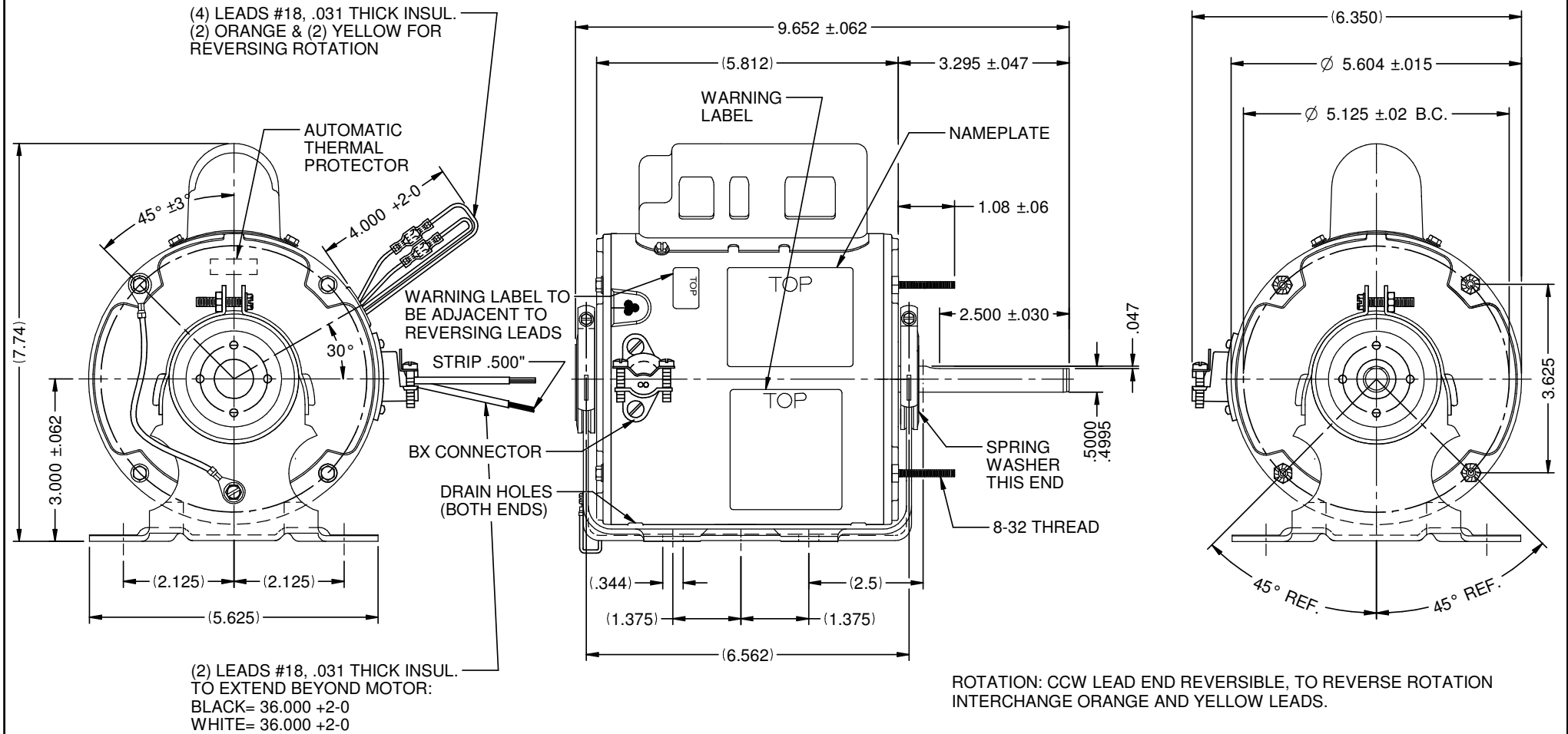


MODEL	REF	CUSTOMER	HP	VOLTS	AMPS	HZ	RPM	ROTATION	CAT. #	DESCRIPTION / REMARKS
K55HXRGD-1940		WHOLESALE - HAC	1/3	115	5.35	60	1075	CCW LEAD END REV	1388	K55, RESILENT BASE, BALL BEARING, ENCLOSED



NIDEC MOTOR CORPORATION 20-Dec-18

REFER TO S.E.I.M. 24-1

DRAWING WAS CREATED		REVISION RECORD FOR: ECO E32354
ISSUED BY: G. TREVIÑO	ENGINEER APPROVED: D. TEJEDA	

DIMENSIONS ARE FOR REFERENCE ONLY

UNLESS TOLERANCE IS SPECIFIED

**NIDEC MOTOR CORPORATION**

INFORMATION DISCLOSED ON THIS DOCUMENT IS CONSIDERED PROPRIETARY AND SHALL NOT BE REPRODUCED OR DISCLOSED WITHOUT WRITTEN CONSENT OF NIDEC MOTOR CORPORATION

REVISION DATE: 20-DEC-18

TITLE		CODE	ITEM NO.	REV	SHEET NUMBER	DWG SIZE
CUSTOMER DETAIL DRAWING		V02	824311	--	1 OF 3	B