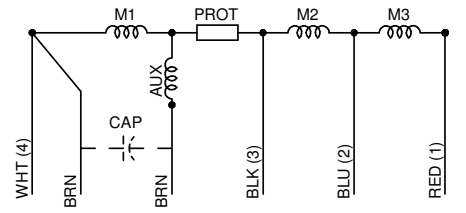
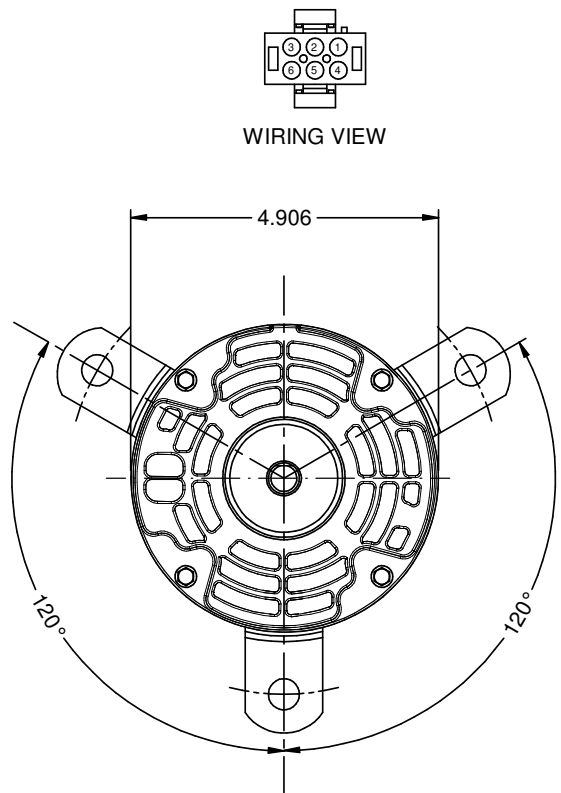
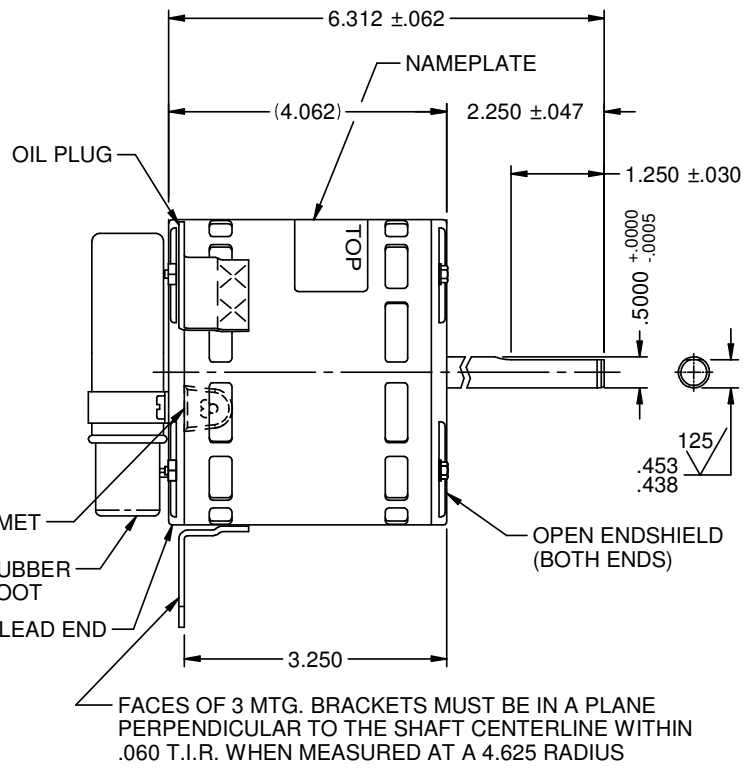
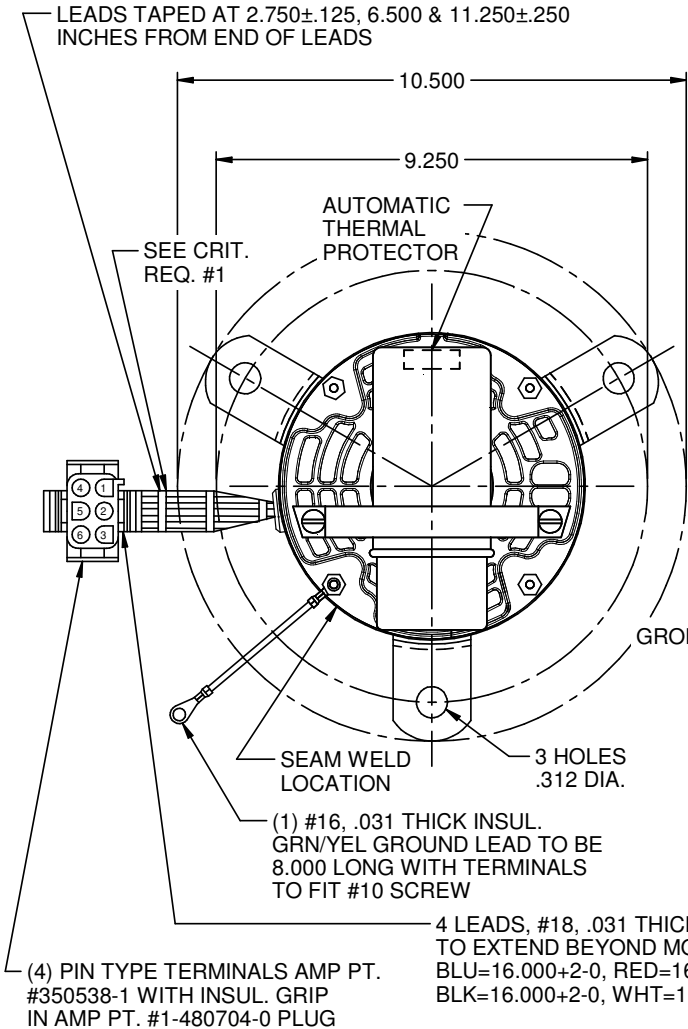


MODEL	REF	CUSTOMER	HP	VOLTS	AMPS	HZ	RPM	ROTATION	CUSTOMER PART	DESCRIPTION / REMARKS
K48HXTUB-0122	-----	WHOLESALE-HAC	1/16	115	1.1	60	850/700/525	CW. LEAD END	1105	K48 S/A BEARING OPEN



NIDEC MOTOR CORPORATION 12-Feb-19

REFER TO S.E.I.M. 24-1

REVISION RECORD FOR:	ECO E33753
UPDATED ASSEMBLY INSTRUCTIONS.	
ISSUED BY:	C.ALMAGUER
ENGINEER APPROVED:	M. DE LEON

DIMENSIONS ARE FOR REFERENCE ONLY  
UNLESS TOLERANCE IS SPECIFIED

<b>NIDEC MOTOR CORPORATION</b>			
INFORMATION DISCLOSED ON THIS DOCUMENT IS CONSIDERED PROPRIETARY AND SHALL NOT BE REPRODUCED OR DISCLOSED WITHOUT WRITTEN CONSENT OF NIDEC MOTOR CORPORATION			
TITLE		CODE	ITEM NO.
CUSTOMER DETAIL DRAWING		V02	823771
REV	SHEET NUMBER	DWG SIZE	REVISION DATE:
A	1 OF 3	B	12-FEB-19