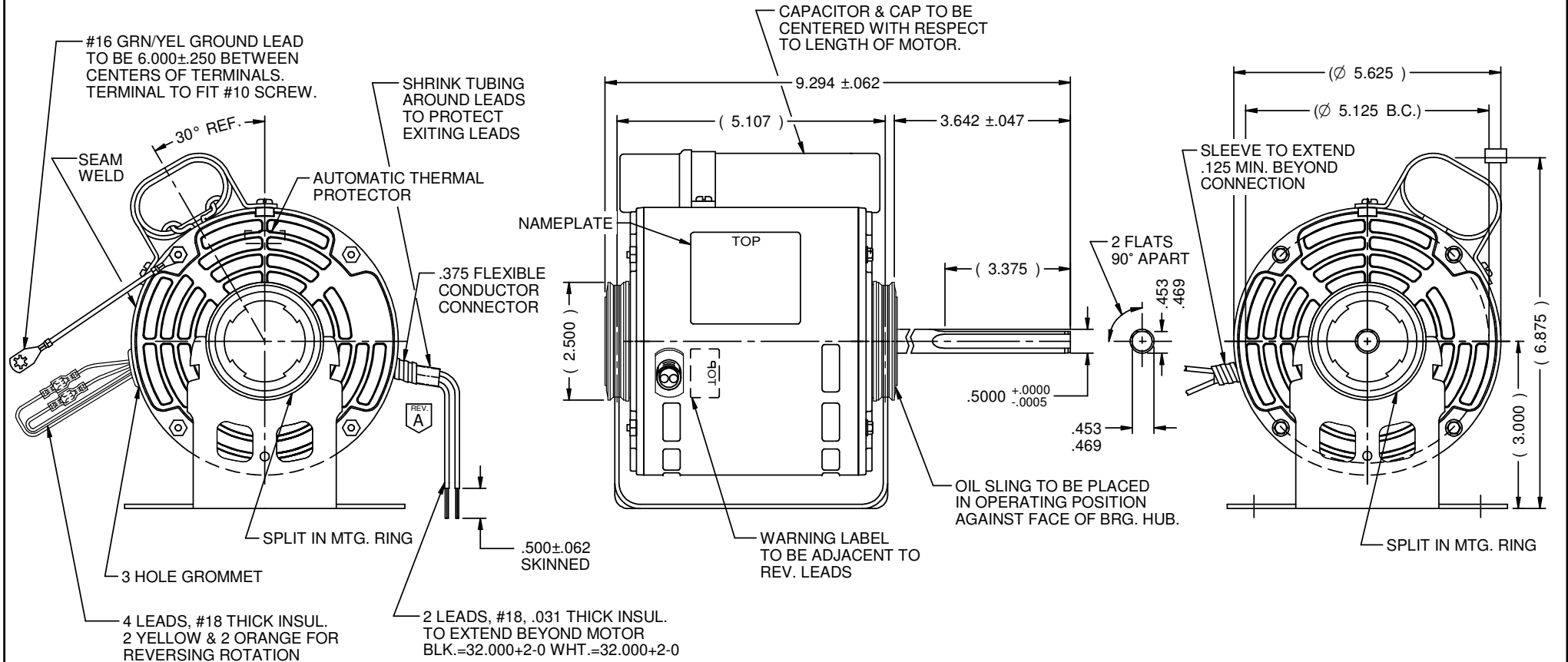


MODEL	REF	CUSTOMER	HP	VOLTS	AMPS	HZ	RPM	ROTATION	CUSTOMER PT. NO.	DESCRIPTION / REMARKS
K55HXSEW-7232		STANDARD	1/3	208-230	2.9	60	1625	CW LEAD END REV	7232	K55 HUB MTD. SELF-ALIGN BRG. OPEN



NOTE:
SHIPPED DETACHED CLAMPS

NIDEC MOTOR CORPORATION 05-Jun-20

REFER TO S.E.I.M. 24-1

REVISION RECORD FOR:		E37257
ADDED VIEW AND NOTE OF TUBING IN LEADS IN PAGES 1 & 2.		
ISSUED BY:	ENGINEER APPROVED:	
O. CASTANEDA	A. WALSH	

DIMENSIONS ARE FOR REFERENCE ONLY

UNLESS TOLERANCE IS SPECIFIED

NIDEC MOTOR CORPORATION			
INFORMATION DISCLOSED ON THIS DOCUMENT IS CONSIDERED PROPRIETARY AND SHALL NOT BE REPRODUCED OR DISCLOSED WITHOUT WRITTEN CONSENT OF NIDEC MOTOR CORPORATION			REVISION DATE: 05-JUN-20
TITLE	CODE	ITEM NO.	REV
CUSTOMER DETAIL DRAWING	V02	823549	A
SHEET NUMBER		DWG SIZE	
1 OF 3		B	