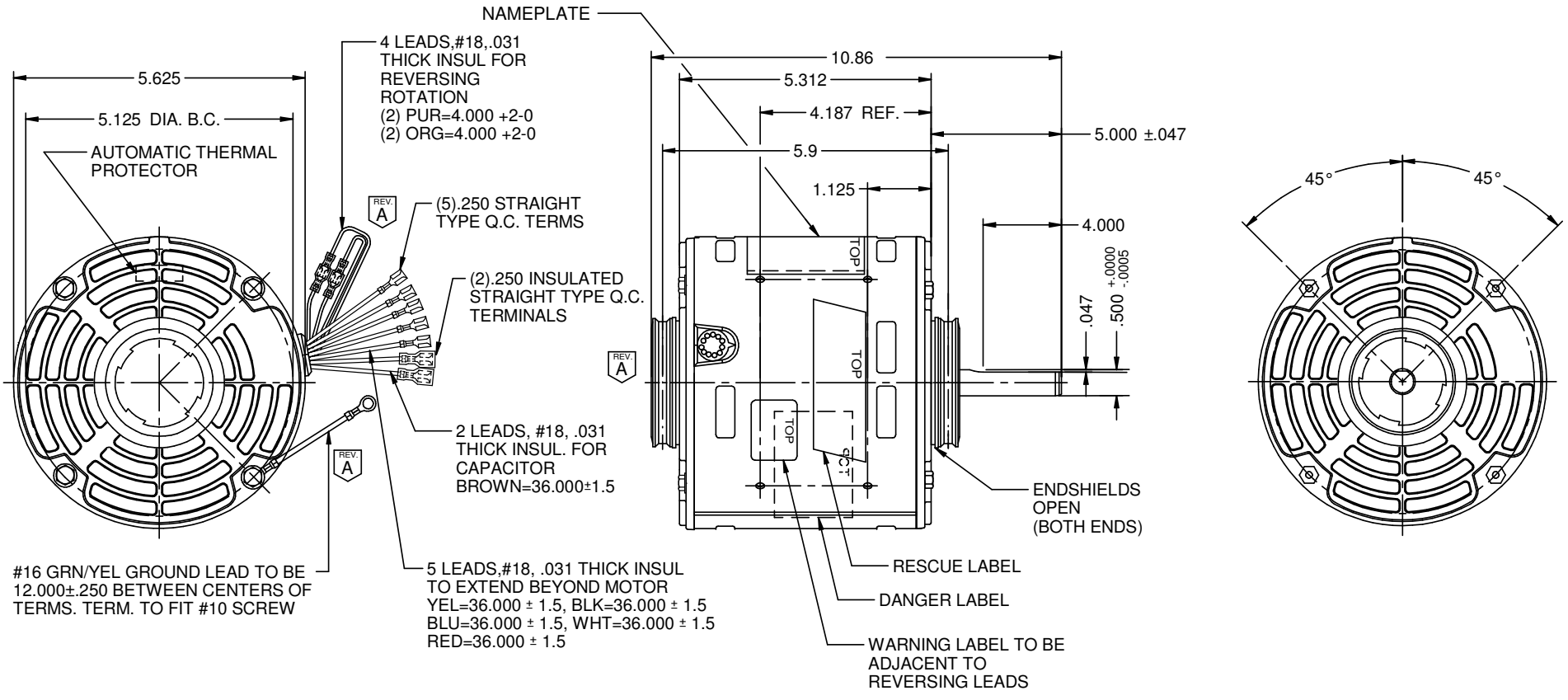


MODEL	REF	CUSTOMER	HP	VOLTS	AMPS	HZ	RPM	ROTATION	CUSTOMER PN.	DESCRIPTION / REMARKS
K55HXKPP-3345		WHOLESALE-HAC	1/2	115	7.3	60	1075/4 SPD	CCW LEAD END REVERSIBLE	5432	K55 HUB, S/A BRG



NOTE:  
INSTRUCTION FORM & KIT WITH  
4 NUTS WITH CAPTIVE STAR WASHER  
SHIPPED IN CARTON

NIDEC MOTOR CORPORATION 12-Mar-19

REFER TO S.E.I.M. 24-1

REVISION RECORD FOR: ECO E34021	
CHANGED THE REVERSING LEAD EXIT LOACATION.	
CHANGED THE POSITION OF THE GROUND LEAD.	
ISSUED BY: A.GARCIA	ENGINEER APPROVED: J. RICE

DIMENSIONS ARE FOR REFERENCE ONLY

UNLESS TOLERANCE IS SPECIFIED

<b>NIDEC MOTOR CORPORATION</b>			
INFORMATION DISCLOSED ON THIS DOCUMENT IS CONSIDERED PROPRIETARY AND SHALL NOT BE REPRODUCED OR DISCLOSED WITHOUT WRITTEN CONSENT OF NIDEC MOTOR CORPORATION			
TITLE		REVISION DATE:	
CUSTOMER DETAIL DRAWING		13-MAR-19	
CODE	ITEM NO.	REV	SHEET NUMBER
V02	822995	A	1 OF 3
			DWG SIZE
			B