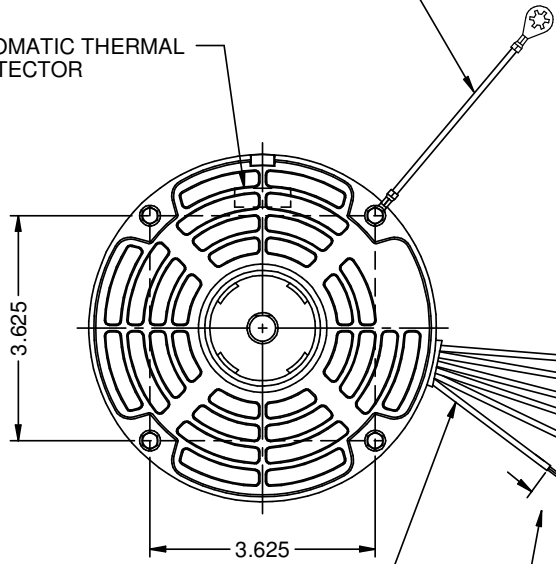


MODEL	REF	CUSTOMER	HP	VOLTS	AMPS	HZ	RPM	ROTATION	CATALOG NO.	DESCRIPTION / REMARKS
KA55HXSAF-7862		STANDARD	1/3	230	2.5	60	1075 / 3SPD	CCW LEAD END	1213	

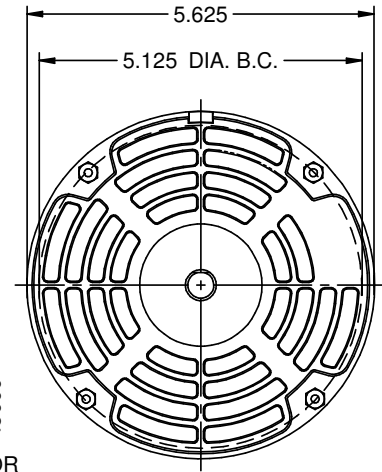
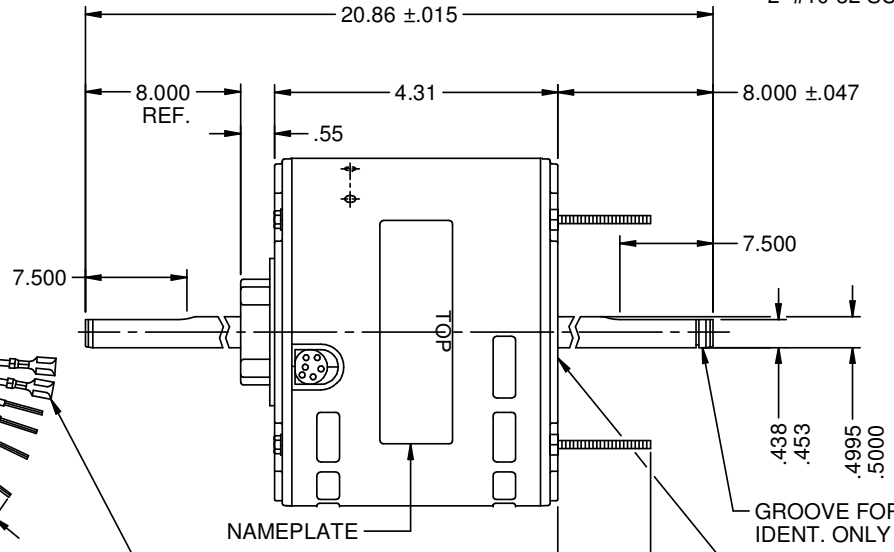
#16 GREEN GROUND LEAD TO BE 6.000±.250 BETWEEN CENTERS OF TERMS. TERM. TO FIT #10 SCREW

AUTOMATIC THERMAL PROTECTOR



SUPPLIED DETACHED

- 1- BRACKET MTG. ASM.
- 8- #8-32 NUTS
- 2- HUB RINGS
- 2- #10-32 SCREWS
- 1- CAPACITOR 5 MFD 370 VAC
- 1- CAPACITOR CLAMP
- 1- CAPACITOR CAP

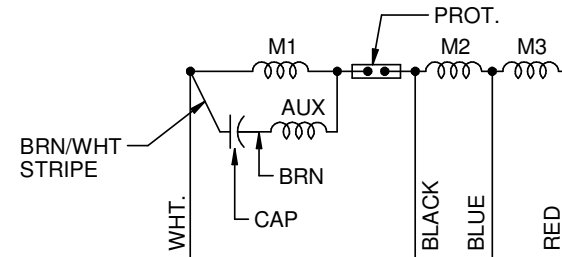


6 LEADS, #18, .031 THICK INSUL. TO EXTEND BEYOND MOTOR:  
 WHT(C)= 20.000 +2-0, BLU(2)=20.000 +2-0  
 BLK(1)= 20.000 +2-0, RED(3)=20.000 +2-0  
 BRN= 20.000 +2-0, BRN/WHT STRIPE =20.000 +2-0  
 FIGURES TO BE PRINTED ON LEADS.  
 LEADS TO BE PROTECTED WHIT A GROMMET

.750±.062 SKINNED

(2) .25 STRAIGHT TYPE Q.C. TERMS. ON BROWN LEADS

OIL SLING TO BR PLACED IN OPERATING POSITION AGAINST FACE OF BRG. HUB BOTH ENDS



COLOR CODE

WHITE	-	COMMON
BLACK	-	HIGH
BLUE	-	MED
RED	-	LOW
BROWN	-	CAPAC.

NIDEC MOTOR CORPORATION 25-May-17

REFER TO S.E.I.M. 24-1

CREATED DRAWING.	REVISION RECORD FOR: E28700
ISSUED BY: G. MEDINA	ENGINEER APPROVED: H. NAVARRO

DIMENSIONS ARE FOR REFERENCE ONLY

UNLESS TOLERANCE IS SPECIFIED

**NIDEC MOTOR CORPORATION**

INFORMATION DISCLOSED ON THIS DOCUMENT IS CONSIDERED PROPRIETARY AND SHALL NOT BE REPRODUCED OR DISCLOSED WITHOUT WRITTEN CONSENT OF NIDEC MOTOR CORPORATION

REVISION DATE: 23-MAY-17

TITLE	CODE	ITEM NO.	REV	SHEET NUMBER	DWG SIZE
CUSTOMER DETAIL DRAWING	V02	815751	-	1 OF 3	B