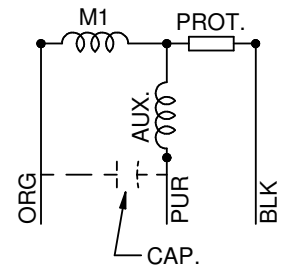
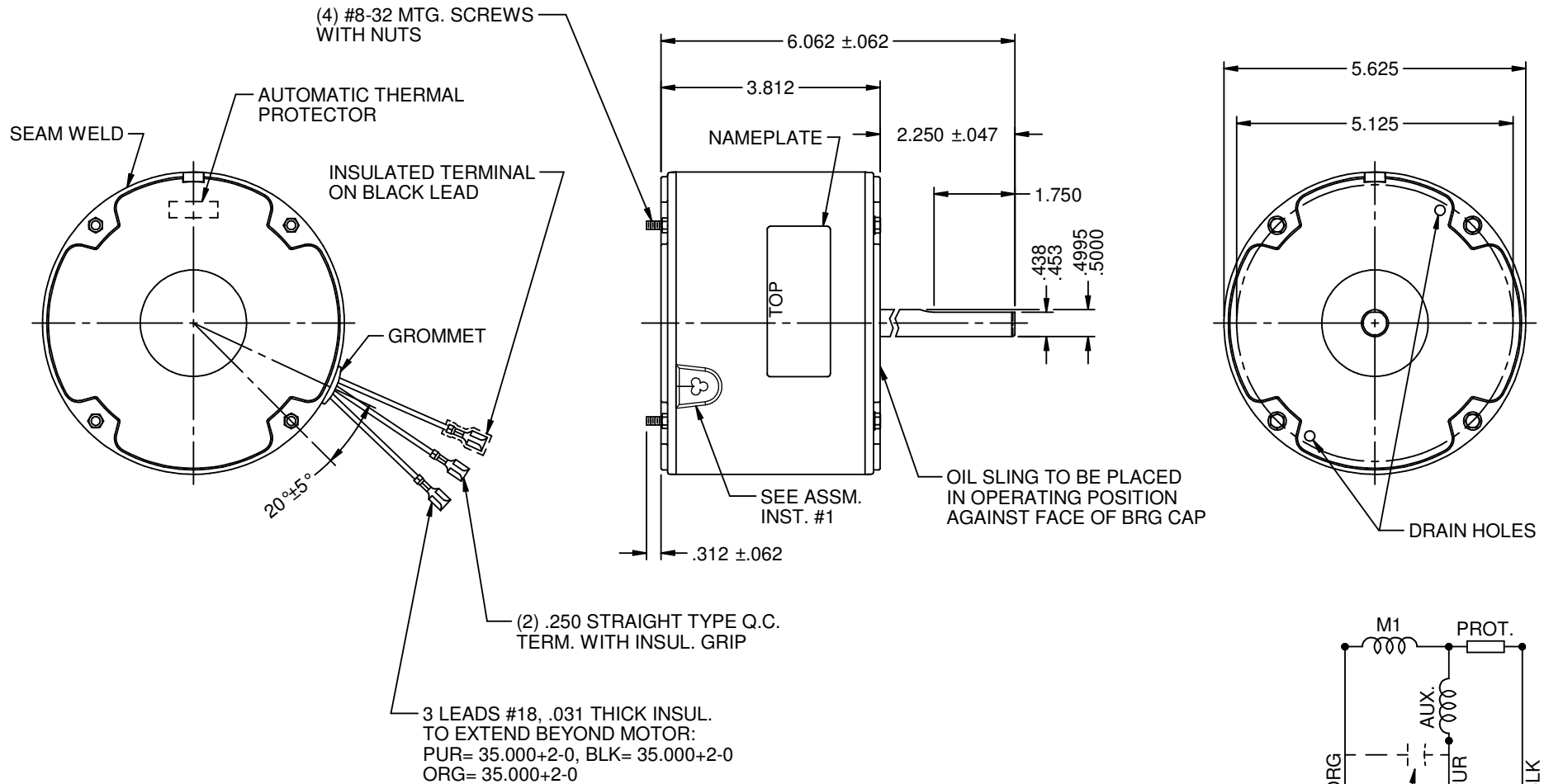


MODEL	REF	CUSTOMER	HP	VOLTS	AMPS	HZ	RPM	ROTATION	CUSTOMER PN	DESCRIPTION / REMARKS
K55HXDUW-1262	A33533	WHOLESALE HAC	1/6	208-230	1.0	60	1075	CCW LEAD END	LX7925	



NIDEC MOTOR CORPORATION 05-Jun-17

REFER TO S.E.I.M. 24-1

REVISION RECORD FOR: E28697	
NEW DRAWING.	
ISSUED BY: B. ANDRADE	ENGINEER APPROVED: H. NAVARRO

DIMENSIONS ARE FOR REFERENCE ONLY

UNLESS TOLERANCE IS SPECIFIED

NIDEC MOTOR CORPORATION				
INFORMATION DISCLOSED ON THIS DOCUMENT IS CONSIDERED PROPRIETARY AND SHALL NOT BE REPRODUCED OR DISCLOSED WITHOUT WRITTEN CONSENT OF NIDEC MOTOR CORPORATION				
TITLE			REVISION DATE:	
CUSTOMER DETAIL DRAWING			18-MAY-17	
CODE	ITEM NO.	REV	SHEET NUMBER	DWG SIZE
V02	815672	-	1 OF 3	B