

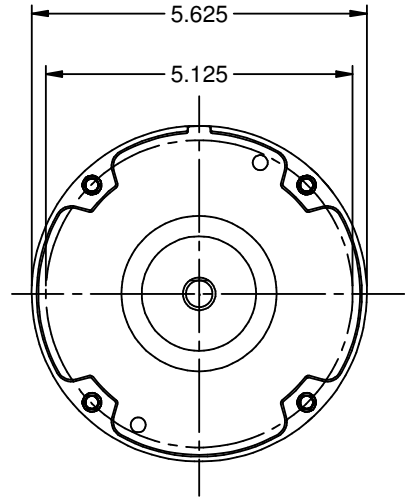
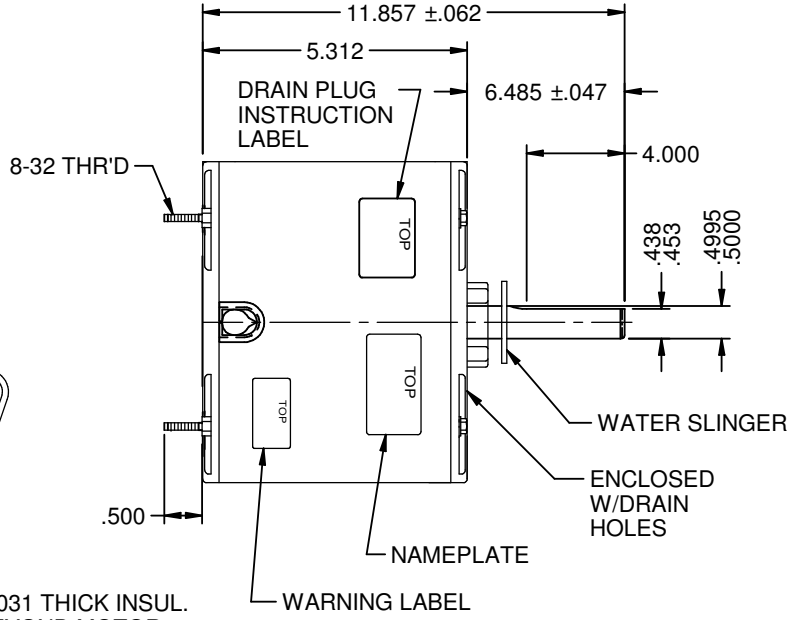
MODEL	REF	CUSTOMER	HP	VOLTS	AMPS	HZ	RPM	ROTATION	CAT. NO.	DESCRIPTION / REMARKS
K55ZZDSF-1190	A-32855	NIDEC MOTOR CANADA CORPORATION	1/2	575	1.0	60	1625	CCW LEAD END REV	1198	

4 LEADS #18, .031 THICK INSUL. TO EXTEND FROM SHELL AS FOLLOWS:
 WHT= 48.000+2-0, BLK= 48.000+2-0
 BRN= 48.000+2-0, BRN=48.000+2-0

(4) .250 FLAG TYPE Q.C. TERMINALS WITH INSUL GRIP.

AUTOMATIC THERMAL PROTECTOR

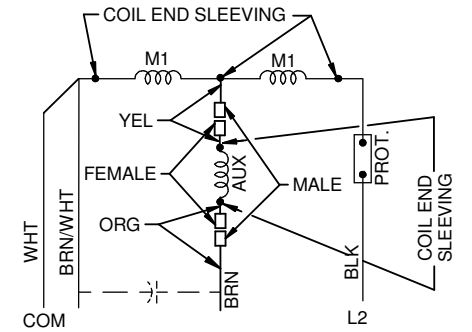
GROMMET



(2) BLACK DRAIN PLUGS (SEE ASSM. INST. #1)

4 LEADS #18, .031 THICK INSUL. TO EXTEND BEYOND MOTOR FOR REVERSING ROTATION
 (2) ORANGE= 4.000+2-0
 (2) YELLOW= 4.000+2-0

#18 GRN/YEL GROUND LEAD TO BE 12.000±.250 BETWEEN CENTERS OF TERMINALS. TERMINAL TO FIT #10 SCREW



NIDEC MOTOR CORPORATION 23-May-17

REFER TO S.E.I.M. 24-1

REVISION RECORD FOR: E28697	
NEW DRAWING.	
ISSUED BY: B. ANDRADE	ENGINEER APPROVED: H. NAVARRO

DIMENSIONS ARE FOR REFERENCE ONLY

UNLESS TOLERANCE IS SPECIFIED

NIDEC MOTOR CORPORATION			
INFORMATION DISCLOSED ON THIS DOCUMENT IS CONSIDERED PROPRIETARY AND SHALL NOT BE REPRODUCED OR DISCLOSED WITHOUT WRITTEN CONSENT OF NIDEC MOTOR CORPORATION			
TITLE		CODE	REVISION DATE:
CUSTOMER DETAIL DRAWING		V02	17-MAY-17
			ITEM NO.
815670		REV	SHEET NUMBER
-		1 OF 3	DWG SIZE
			B