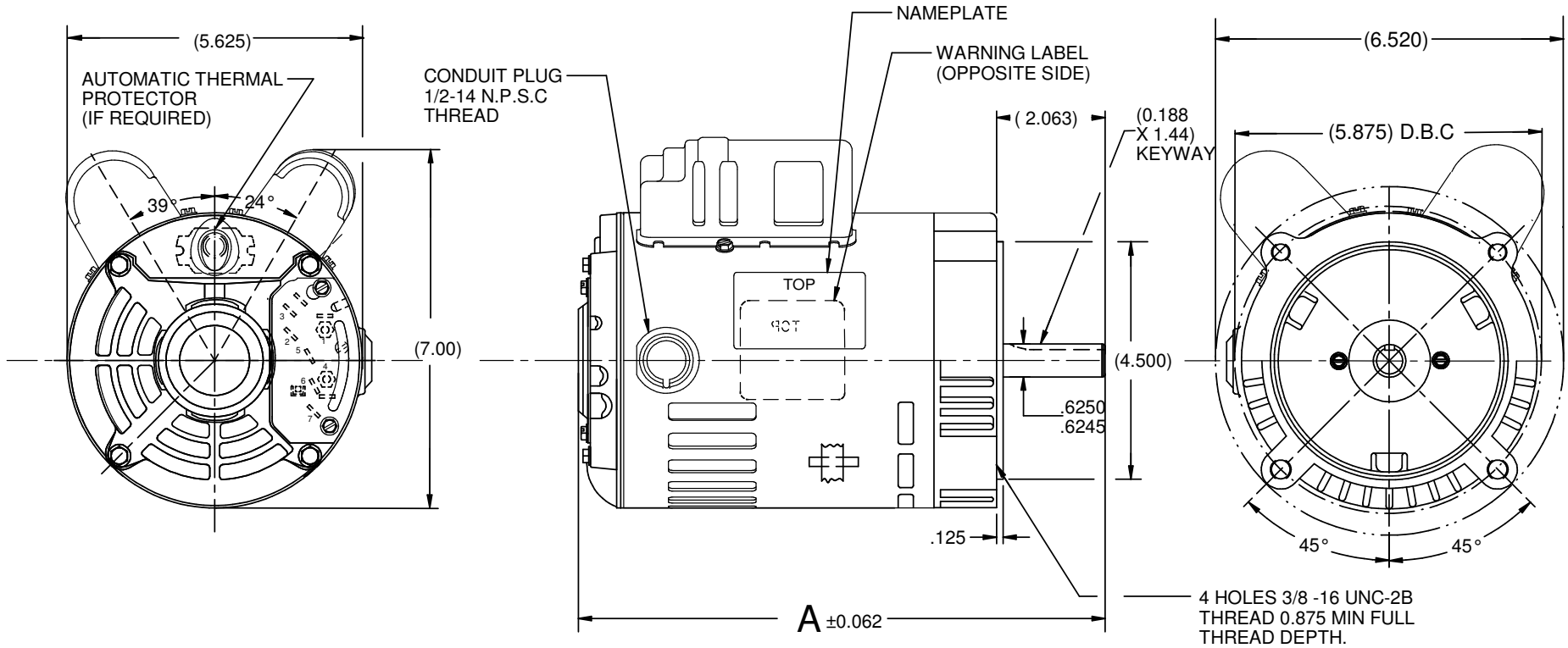


VAR	MODEL	CUSTOMER	CAT. NO.	A	B	C	D	HP	VOLTS	SF	AMPS	HZ	RPM	CONN VOLTS	PROT.	DESCRIPTION / REMARKS
001	T55JXCSA-1552	WHOLESALE HAC	D13CPA2PCR	9.938	-----	-----	-----	1/3	115/230 & 110/220	1.35	3.9/1.9 & 4.8/2.4	60 & 50	1725 & 1425	230	AUTO	56C, ODP, CCW LEAD END REV.



SHAFT KEY TAPED TO MOTOR

NIDEC MOTOR CORPORATION 18-Jan-16

REFER TO S.E.I.M. 24-1

CREATED DRAWING.		REVISION RECORD FOR: JC 70553	<p align="center">NIDEC MOTOR CORPORATION</p> <p align="center">INFORMATION DISCLOSED ON THIS DOCUMENT IS CONSIDERED PROPRIETARY AND SHALL NOT BE REPRODUCED OR DISCLOSED WITHOUT WRITTEN CONSENT OF NIDEC MOTOR CORPORATION</p>				REVISION DATE: 06-JAN-16		
ISSUED BY: G. ISASSI		ENGINEER APPROVED: M. GUZMAN					TITLE: CUSTOMER DETAIL DRAWING		CODE: V02