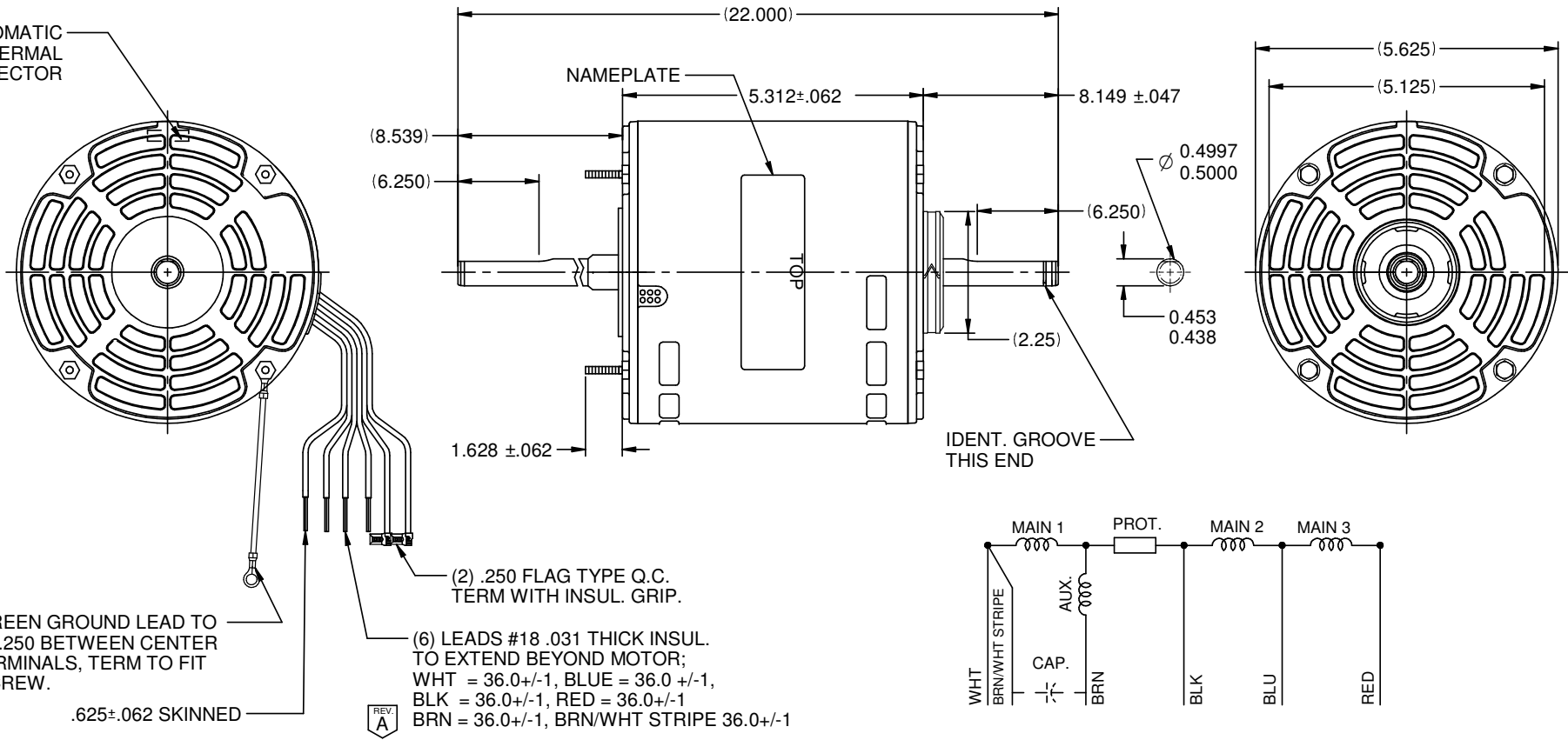


MODEL	REF	CUSTOMER	HP	VOLTS	AMPS	HZ	RPM	ROTATION	CUSTOMER PT. NO.	DESCRIPTION / REMARKS
K55HXRLD-2210	C4 1385	WHOLESALE HAC	1/2	208-230	3.37	60	1075/3 SPD	CCW LEAD END	NA1056	K55 HUB OR STUD MTD S/A BRG OPEN

NOTE:
KIT WITH BRACKET ASSEMBLY, RINGS
SCREWS AND NUTS TO BE INCLUDED
IN CARTON BOX.

AUTOMATIC
THERMAL
PROTECTOR



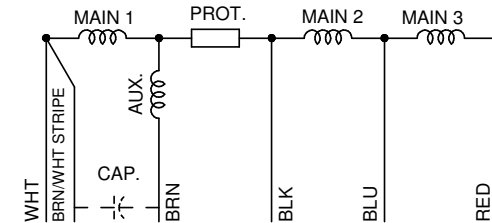
#16 GREEN GROUND LEAD TO
BE 24±.250 BETWEEN CENTER
OF TERMINALS, TERM TO FIT
#10 SCREW.

.625±.062 SKINNED

(2) .250 FLAG TYPE Q.C.
TERM WITH INSUL. GRIP.

(6) LEADS #18 .031 THICK INSUL.
TO EXTEND BEYOND MOTOR;
WHT = 36.0+/-1, BLUE = 36.0 +/-1,
BLK = 36.0+/-1, RED = 36.0+/-1
BRN = 36.0+/-1, BRN/WHT STRIPE 36.0+/-1

REV. A



NIDEC MOTOR CORPORATION 24-Feb-16

REFER TO S.E.I.M. 24-1

REVISION RECORD FOR:		E25008	
ELIMINATED NOTE "FIGURES TO BE PRINTED ON LEADS"			
ISSUED BY:	ENGINEER APPROVED:		
I. NUÑEZ	A. VILLANUEVA		

TOLERANCES ON DIMENSIONS (UNLESS OTHERWISE SPECIFIED)	
INCHES .XX = ± .010 .XXX = ± .005	mm
ANGLES X° = ±1°	

NIDEC MOTOR CORPORATION			
INFORMATION DISCLOSED ON THIS DOCUMENT IS CONSIDERED PROPRIETARY AND SHALL NOT BE REPRODUCED OR DISCLOSED WITHOUT WRITTEN CONSENT OF NIDEC MOTOR CORPORATION			
REVISION DATE:			24-FEB-16
TITLE	CODE	ITEM NO.	REV
CUSTOMER DETAIL DRAWING	V02	808185	A
SHEET NUMBER		DWG SIZE	
1 OF 3		B	