

MODEL	REF	CUSTOMER	HP	VOLTS	AMPS	HZ	RPM	ROTATION	CATALOG #	DESCRIPTION / REMARKS
K55HRJS-2175	C41115	WHOLESALE HAC	3/4	115	8.2	60	1075 / 3SPD	CCW LE	NAL1076	O.A.O. AIR CONDITIONER MOTOR.

AUTOMATIC THERMAL PROTECTOR

GROMMET

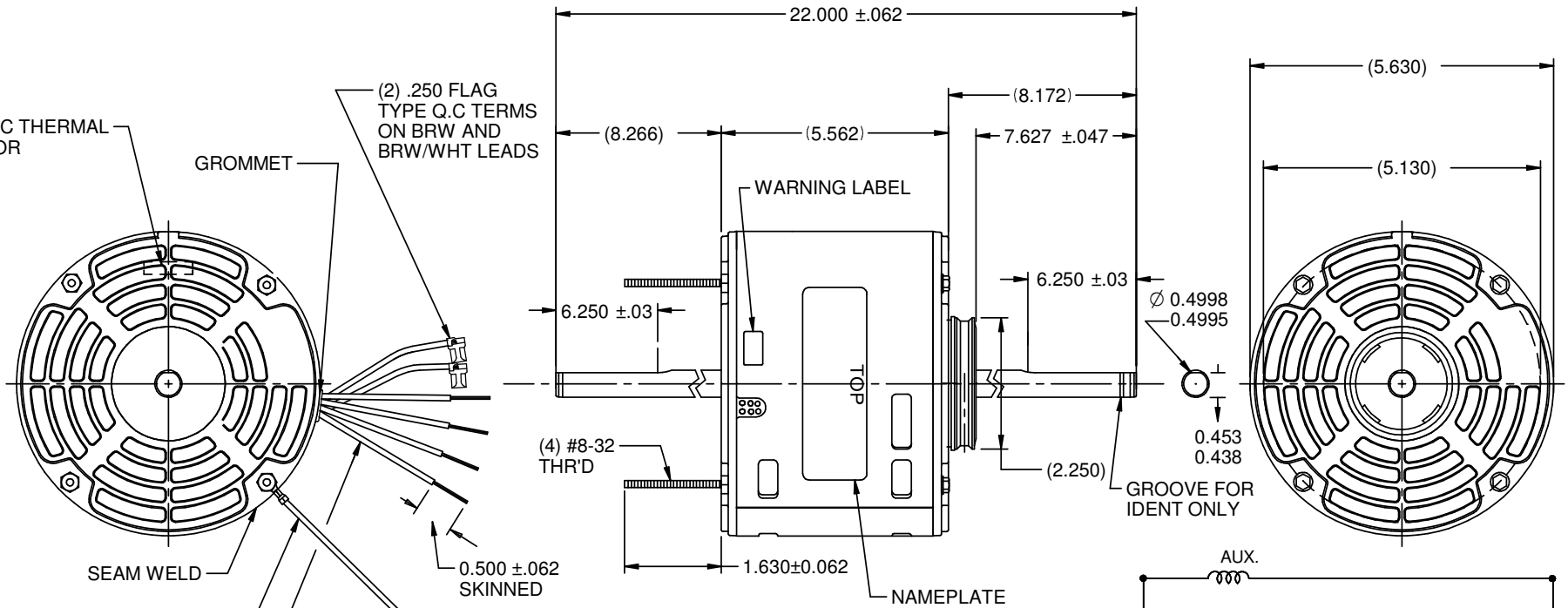
(2) .250 FLAG TYPE Q.C TERMS ON BRW AND BRW/WHT LEADS

WARNING LABEL

TOP

NAMEPLATE

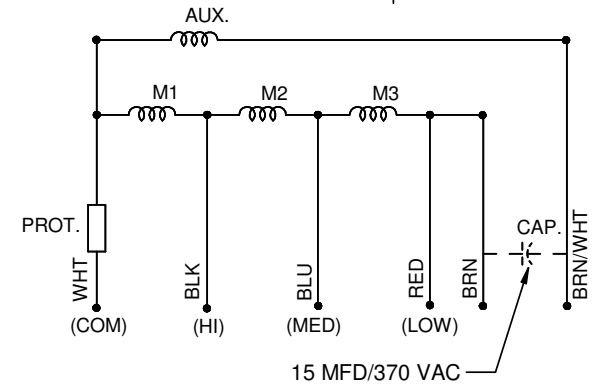
GROOVE FOR IDENT ONLY



#16 GREEN GROUND LEAD TO BE 26.0±1 BETWEEN CENTERS OF TERMINALS, TERMINAL TO FIT #10 SCREW

6 LEADS #18, 0.062 THICK INSUL. TO EXTEND BEYOND MOTOR:
 WHT=36.0±1, BLUE=36.0±1
 BLK=36.0±1, RED=36.0±1
 BRN=36.0±1, BRN/WHT STRIPE=36.0 ±1

KIT WITH BRACKET ASSEMBLY, RINGS, SCREWS AND NUTS TO BE INCLUDED IN CARTON BOX



NIDEC MOTOR CORPORATION 30-Jul-15

REFER TO S.E.I.M. 24-1

REVISION RECORD FOR:	JC 70083
ISSUED BY:	A. SAUCEDO
ENGINEER APPROVED:	M. GUZMAN

TOLERANCES ON DIMENSIONS (UNLESS OTHERWISE SPECIFIED)	
INCHES	mm
.XX = ±.010	
.XXX = ±.005	
ANGLES X° = ±1°	

NIDEC MOTOR CORPORATION			
INFORMATION DISCLOSED ON THIS DOCUMENT IS CONSIDERED PROPRIETARY AND SHALL NOT BE REPRODUCED OR DISCLOSED WITHOUT WRITTEN CONSENT OF NIDEC MOTOR CORPORATION			
TITLE		CODE	REVISION DATE
CUSTOMER DETAIL DRAWING	V02	13-JUL-15	
ITEM NO.	REV	SHEET NUMBER	DWG SIZE
806550	--	1 OF 3	B