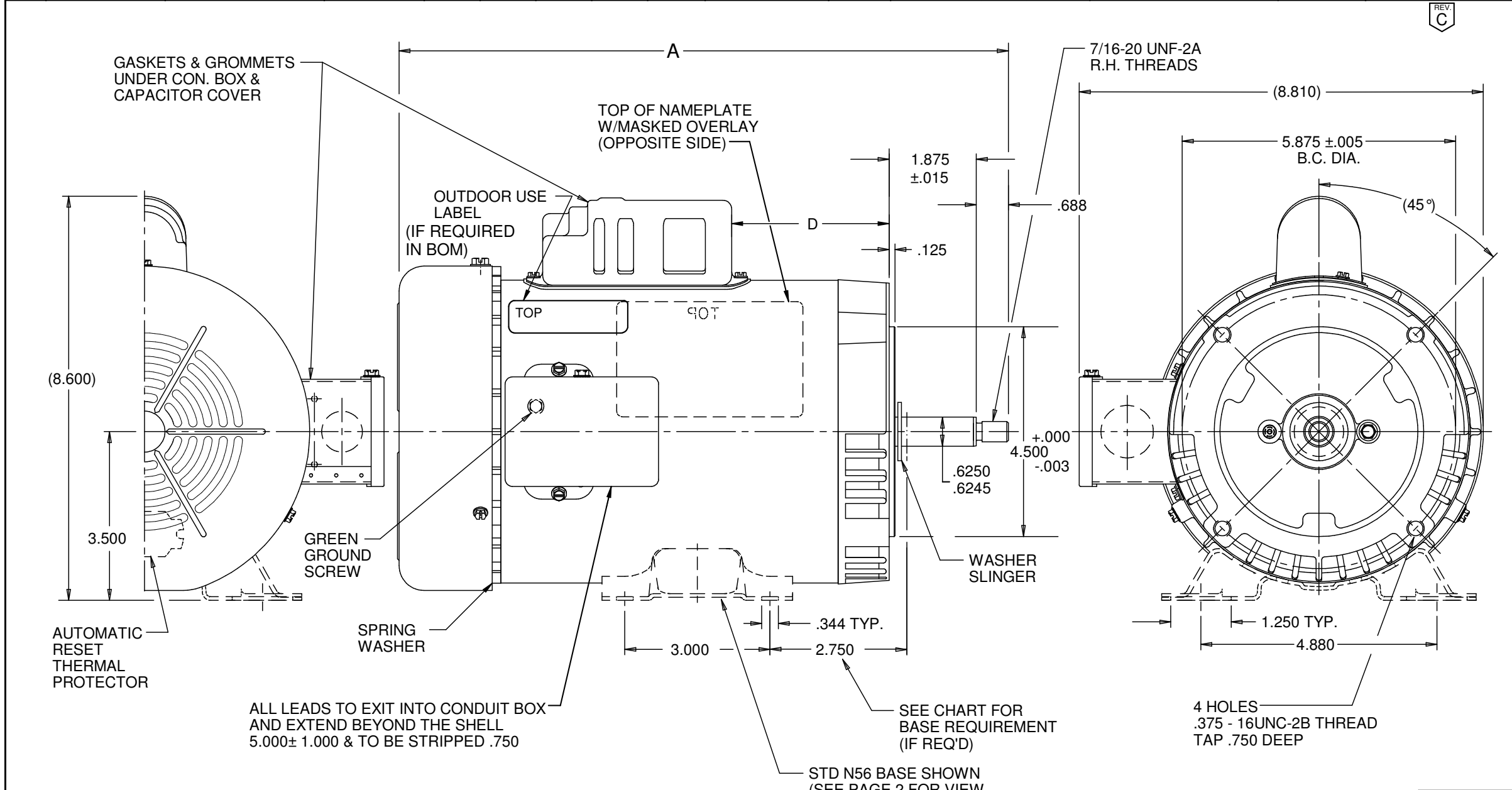


| VAR | MODEL         | CUSTOMER         | CATALOG | A      | B  | C | D     | HP  | VOLTS               | SF  | SF AMPS | HZ    | RPM       | BASE REQUIREMENT | OUT DOOR LABEL REQUIREMENT | ROTATION    |
|-----|---------------|------------------|---------|--------|----|---|-------|-----|---------------------|-----|---------|-------|-----------|------------------|----------------------------|-------------|
| 001 | C63JXHMP-5043 | COMMERCIAL PUMPS | EU01    | 11.847 | -- | - | 2.508 | 1/3 | 115/208-230&110/220 | --- | ----    | 60/50 | 3450/2850 | REMOVABLE N56    | YES                        | CW LEAD END |

REV C



NIDEC MOTOR CORPORATION 05-Feb-19

REFER TO S.E.I.M. 24-1

BEARING  
BALL-BALL

|  |                                |
|--|--------------------------------|
| REVISION RECORD FOR: ECO E33608                        |                                |
| CHANGED ROTATION FROM "CCW DRIVE END" TO "CW LEAD END" |                                |
| ISSUED BY: J. ALVARADO                                 | ENGINEER APPROVED: H. CHAPARRO |

| TOLERANCES ON DIMENSIONS<br>(UNLESS OTHERWISE SPECIFIED) |    |
|--|----|
| INCHES<br>.XX = ±.010<br>.XXX = ±.005                    | mm |
| ANGLES X° = ±1°  |    |

| NIDEC MOTOR CORPORATION  |     |              |                |
|--|-----|--------------|----------------|
| INFORMATION DISCLOSED ON THIS DOCUMENT IS CONSIDERED PROPRIETARY AND SHALL NOT BE REPRODUCED OR DISCLOSED WITHOUT WRITTEN CONSENT OF NIDEC MOTOR CORPORATION |     |              |                |
| TITLE  |     | CODE         | REVISION DATE: |
| CUSTOMER DETAIL DRAWING  |     | V02          | 05-FEB-19      |
| ITEM NO.   | REV | SHEET NUMBER | DWG SIZE       |
| 806347   | C   | 1 OF 8       | B              |