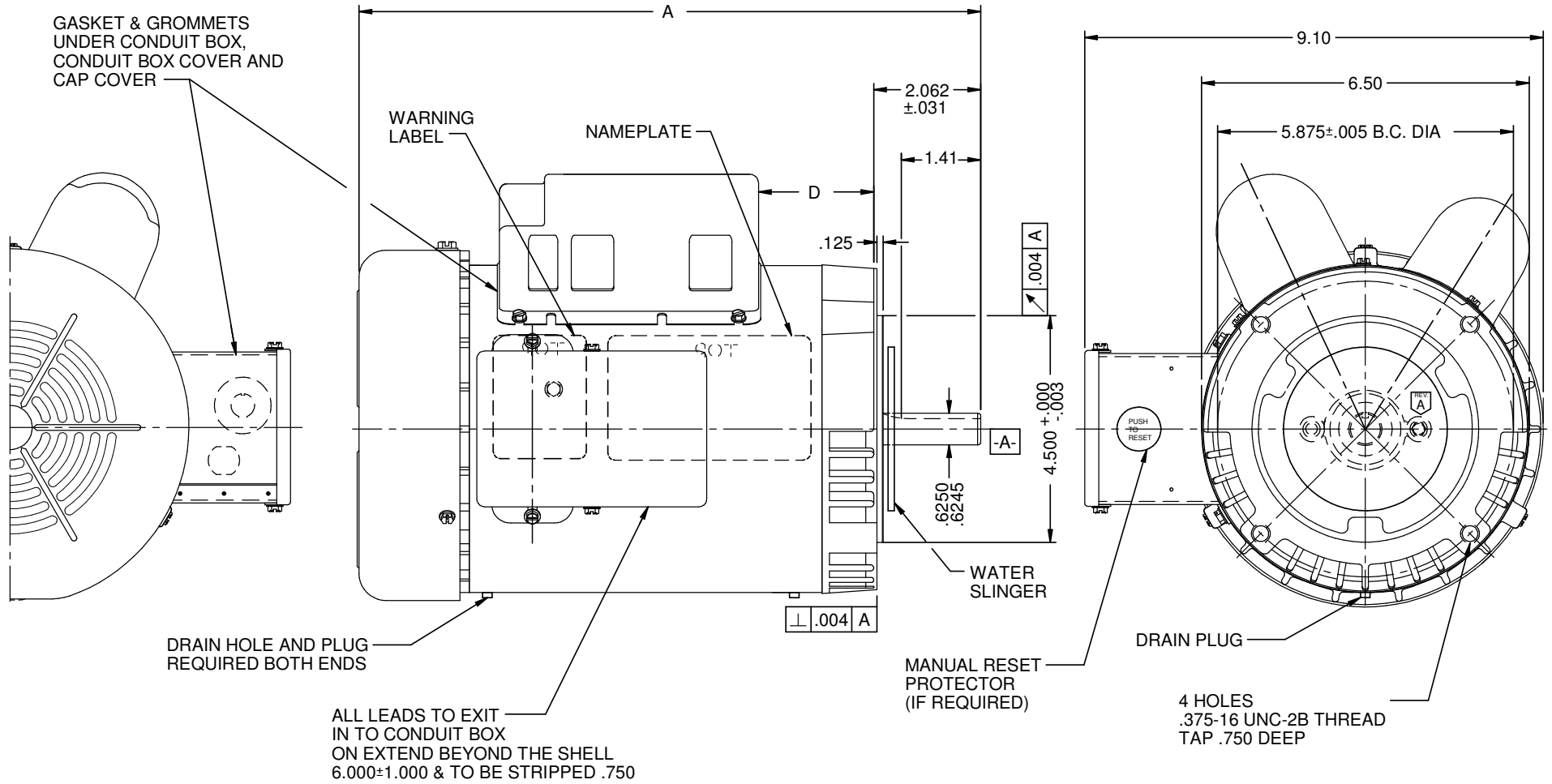


| VAR | MODEL | CUSTOMER | CATALOG NO. | A | B | C | D | HP | VOLTS | SF | AMPS | HZ | RPM | CONN VOLTS | PROT | BASE REQUIREMENT | DESCRIPTION / REMARKS |
|-----|---------------|-----------|-------------|-------|-------|-------|-------|-------|---------|------|----------|----|------|------------|--------|------------------|--------------------------|
| 001 | T63YZCDA-1873 | WHOLESALE | FD32CM2PCR | 13.88 | ----- | ----- | 3.915 | 1 1/2 | 115/230 | 1.15 | 16.2/8.1 | 60 | 1725 | ----- | MANUAL | NO | REVERSIBLE BALL BEARING. |



NIDEC MOTOR CORPORATION 03-Oct-18

REFER TO S.E.I.M. 24-1

| | |
|---|--------------------|
| REVISION RECORD FOR: E31480 | |
| UPDATED VIEW OF THE MACHINE SCREW FOR BEARING LOCK TAB, WITHOUT SLOT. | |
| ISSUED BY: | ENGINEER APPROVED: |
| R. GUZMAN | J. SALINAS |

| | |
|--|----|
| TOLERANCES ON DIMENSIONS (UNLESS OTHERWISE SPECIFIED) | |
| INCHES .XX = ±.010 .XXX = ±.005 | mm |
| ANGLES X° = ±1° | |

| | | | |
|--|-----|--------------|----------|
| NIDEC MOTOR CORPORATION | | | |
| INFORMATION DISCLOSED ON THIS DOCUMENT IS CONSIDERED PROPRIETARY AND SHALL NOT BE REPRODUCED OR DISCLOSED WITHOUT WRITTEN CONSENT OF NIDEC MOTOR CORPORATION | | | |
| TITLE | | CODE | ITEM NO. |
| CUSTOMER DETAIL DRAWING | | V02 | 805353 |
| REVISION DATE: | REV | SHEET NUMBER | DWG SIZE |
| 03-OCT-18 | A | 1 OF 6 | B |