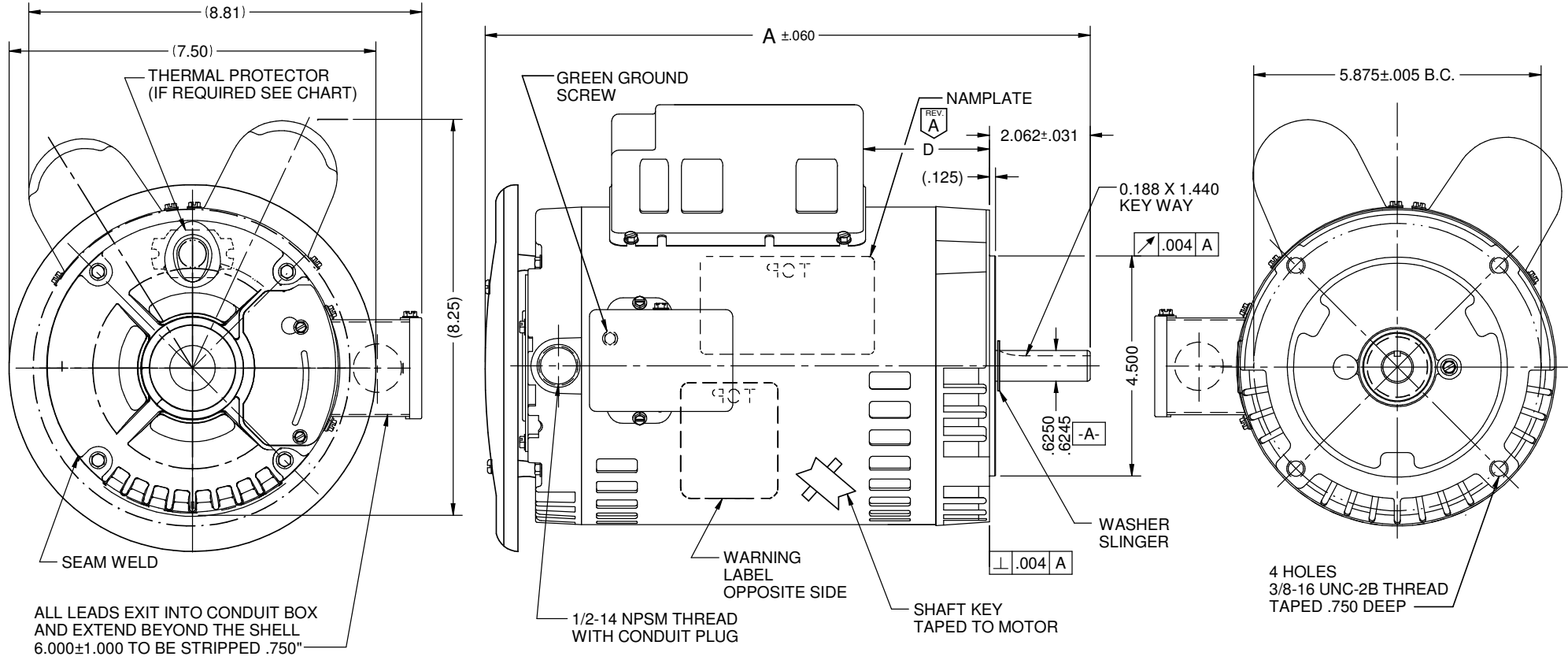


VAR	MODEL	CUSTOMER	CAT. NO.	A	B	C	D	HP	VOLTS	SF	AMPS	HZ	RPM	CONN VOLTS	PROT.	DESCRIPTION / REMARKS
001	T63JEA-2175	USEM	D1CP2PCR	13.124	-----	-----	3.165	1.0	115/230	1.15	8.8/4.4	60	1725	230	NONE	56C, ODP, DRIP COVER

REV. A



NIDEC MOTOR CORPORATION 08-Oct-15

ROTATION: REVERSIBLE

REFER TO S.E.I.M. 24-1

REVISION RECORD FOR:	ECO E23982
ADDED DIMENSION "D".	
ISSUED BY:	I. GUTIERREZ
ENGINEER APPROVED:	W. GARZA

TOLERANCES ON DIMENSIONS (UNLESS OTHERWISE SPECIFIED)	
INCHES .XX = ± .010 .XXX = ± .005	mm
ANGLES X° = ± 1°	

NIDEC MOTOR CORPORATION			
INFORMATION DISCLOSED ON THIS DOCUMENT IS CONSIDERED PROPRIETARY AND SHALL NOT BE REPRODUCED OR DISCLOSED WITHOUT WRITTEN CONSENT OF NIDEC MOTOR CORPORATION			
TITLE		CODE	ITEM NO.
CUSTOMER DETAIL DRAWING		V02	805135
REVISION DATE:	REV	SHEET NUMBER	DWG SIZE
07-OCT-15	A	1 OF 6	B