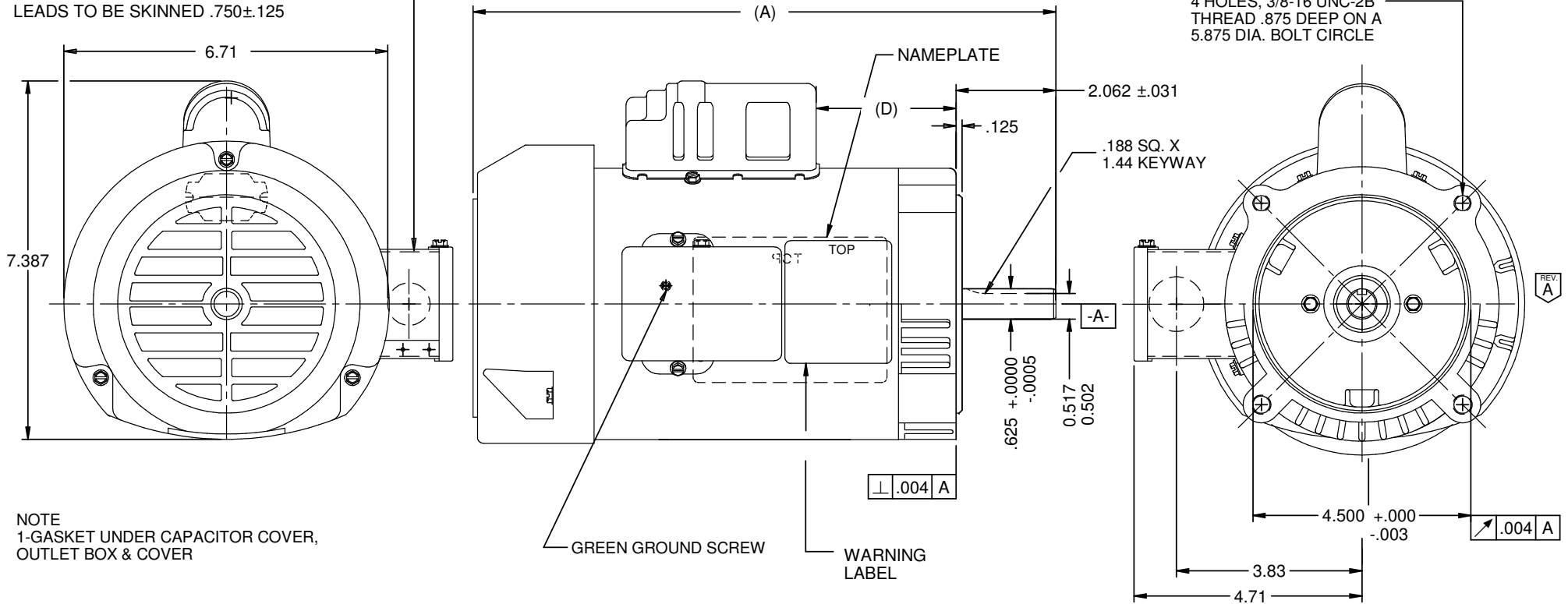


VAR	MODEL	CUSTOMER	CUSTOMER PN	A	B	C	D	HP	VOLTS	SF	AMPS	HZ	RPM	CONN VOLTS	PROT.	DESCRIPTION / REMARKS
001	C55JXKGE-4915	USEM	T12CA1JCR	12.03	-----	-----	4.07	1/2	115/208-230	1.15	8.0/3.8-4.0	60	3450	-----	AUTO	CW LEAD END REV, BALL BEARING

(7) LEADS #18, .031 THICK INSULATION
 125°C INSUL. TO EXTEND BEYOND
 MOTOR INTO CONDUIT BOX
 BLACK=6.000±1.000, RED=6.000±1.000,
 BROWN=6.000±1.000
 BLUE=6.000±1.000, YELLOW=6.000±1.000,
 ORANGE=6.000±1.000 & WHITE=6.000±1.000.
 LEADS TO BE SKINNED .750±.125

SHAFT KEY TAPED TO MOTOR



NOTE
 1-GASKET UNDER CAPACITOR COVER,
 OUTLET BOX & COVER

NIDEC MOTOR CORPORATION 15-Aug-18

REFER TO S.E.I.M. 24-1

REVISION RECORD FOR: ECO E31420
 CHANGED THE VIEW OF BOTH SCREWS TO S05820750 (SCREW WITHOUT SLOT).

TOLERANCES ON DIMENSIONS
 (UNLESS OTHERWISE SPECIFIED)

INCHES	mm
.XX = ±.010	
.XXX = ±.005	

ANGLES X° = ±1°

NIDEC MOTOR CORPORATION

INFORMATION DISCLOSED ON THIS DOCUMENT IS CONSIDERED PROPRIETARY AND SHALL NOT BE
 REPRODUCED OR DISCLOSED WITHOUT WRITTEN CONSENT OF NIDEC MOTOR CORPORATION

REVISION DATE:
 17-AUG-18

ISSUED BY: G. ISASSI

ENGINEER APPROVED: J. SALINAS

TITLE
CUSTOMER DETAIL DRAWING

CODE
V02

ITEM NO.
804494

REV
A

SHEET
 NUMBER
1 OF 6

DWG
 SIZE
B