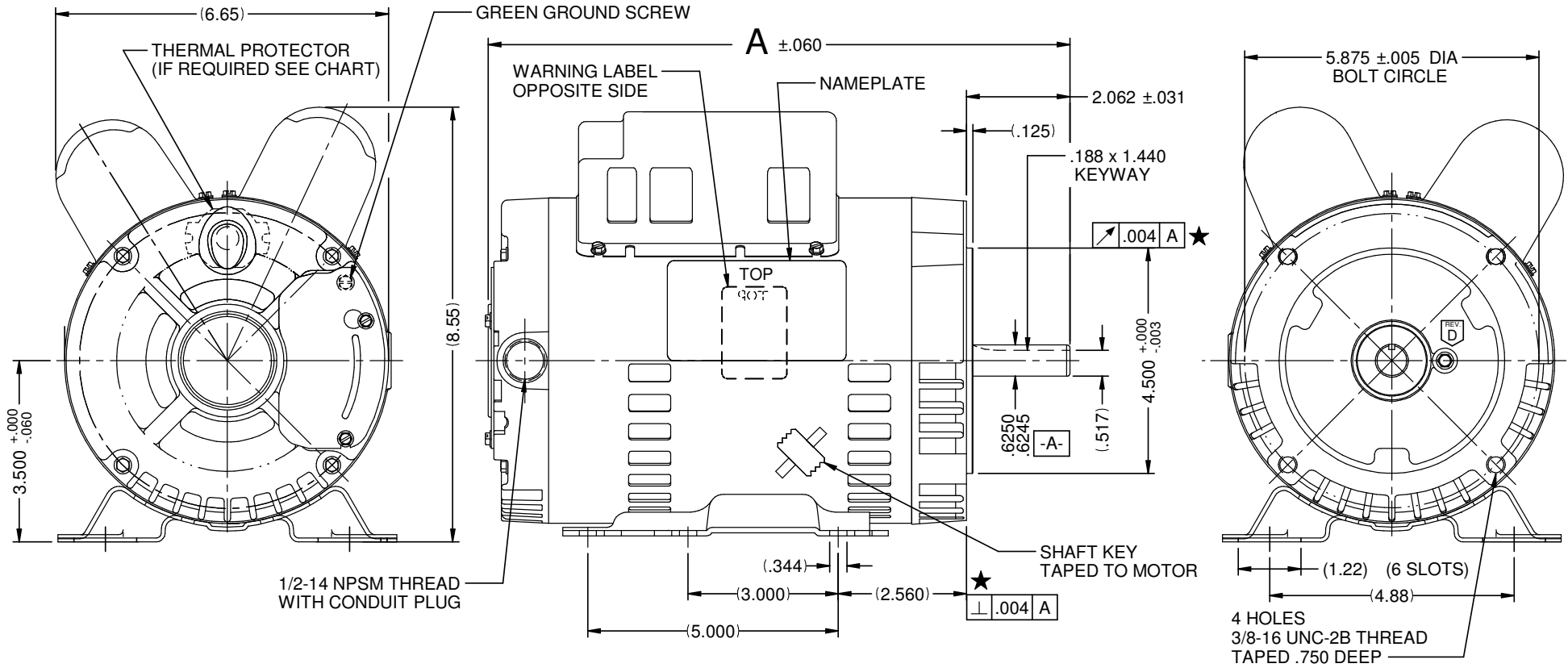


VAR	MODEL	CUSTOMER	CAT. NO.	A	B	C	D	HP	VOLTS	SF	AMPS	HZ	RPM	CONN VOLTS	PROT.	DESCRIPTION / REMARKS
001	T63CPP-2177	USEM	D2CP2PHC	13.360	----	----	----	2.0	115/230	1.15	17.0/8.5	60	1725	230	NONE	N56HC, ODP
002	T63CSR-2222	USEM	D1CP2PHC	12.388	----	----	----	1.0	115/230	1.15	8.8/4.4	60	1725	230	NONE	N56HC, ODP



NIDEC MOTOR CORPORATION 08-Oct-18 MOTOR IS CCW ROTATION LEAD END, TO REVERSE ROTATION INTERCHANGE RED AND BLACK LEADS REFER TO S.E.I.M. 24-1

REVISION RECORD FOR: ECO: E31480	
UPDATED VIEW OF THE MACHINE SCREW FOR BEARING LOCK TAB, WITHOUT SLOT.	
ISSUED BY: R. GUZMAN	ENGINEER APPROVED: J. SALINAS

TOLERANCES ON DIMENSIONS (UNLESS OTHERWISE SPECIFIED)	
INCHES .XX = ± .010 .XXX = ± .005	mm
ANGLES X° = ± 1°	

NIDEC MOTOR CORPORATION				REVISION DATE: 08-OCT-18	
INFORMATION DISCLOSED ON THIS DOCUMENT IS CONSIDERED PROPRIETARY AND SHALL NOT BE REPRODUCED OR DISCLOSED WITHOUT WRITTEN CONSENT OF NIDEC MOTOR CORPORATION					
TITLE: CUSTOMER DETAIL DRAWING		CODE: V02	ITEM NO.: 804431	REV: D	SHEET NUMBER: 1 OF 4
DWG SIZE: B		SOLIDEDGE			