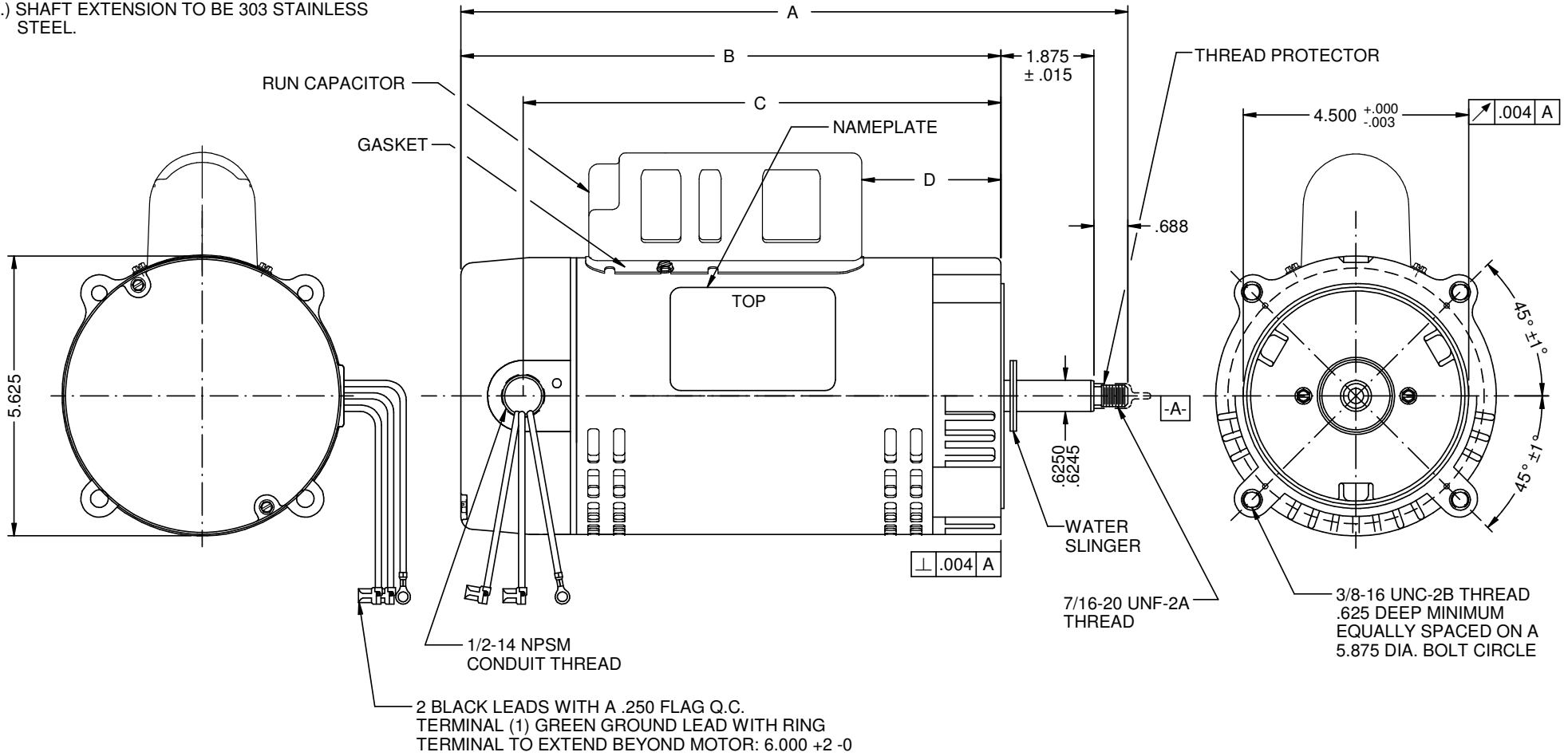


VAR	MODEL	CUSTOMER	CAT. NO	A	B	C	D	HP	VOLTS	SF	AMPS	HZ	RPM	CONN VOLTS	PROT.	DESCRIPTION / REMARKS
001	T55CXCMD-1399	WHOLESALE FLUID SYSTEMS	JJ2002-2	14.52	11.95	10.70	5.11	2	230	1.2	8.6	60	3450	230	AUTO	CCW DRIVE END, BALL BEARING.

NOTE:

1.) SHAFT EXTENSION TO BE 303 STAINLESS STEEL.



NIDEC MOTOR CORPORATION 04-Mar-15

REFER TO S.E.I.M. 24-1

REVISION RECORD FOR: D2756-00	
CREATED NEW DRAWING.	
ISSUED BY: I. GUTIERREZ	ENGINEER APPROVED: R. GIL

TOLERANCES ON DIMENSIONS (UNLESS OTHERWISE SPECIFIED)	
INCHES .XX = ±.010 .XXX = ±.005	mm
ANGLES X° = ±1°	

NIDEC MOTOR CORPORATION			
INFORMATION DISCLOSED ON THIS DOCUMENT IS CONSIDERED PROPRIETARY AND SHALL NOT BE REPRODUCED OR DISCLOSED WITHOUT WRITTEN CONSENT OF NIDEC MOTOR CORPORATION			
TITLE		CODE	ITEM NO.
CUSTOMER DETAIL DRAWING		V02	804388
REVISION DATE:		REV	SHEET NUMBER
04-MAR-15		--	1 OF 6
		DWG SIZE	
		B	