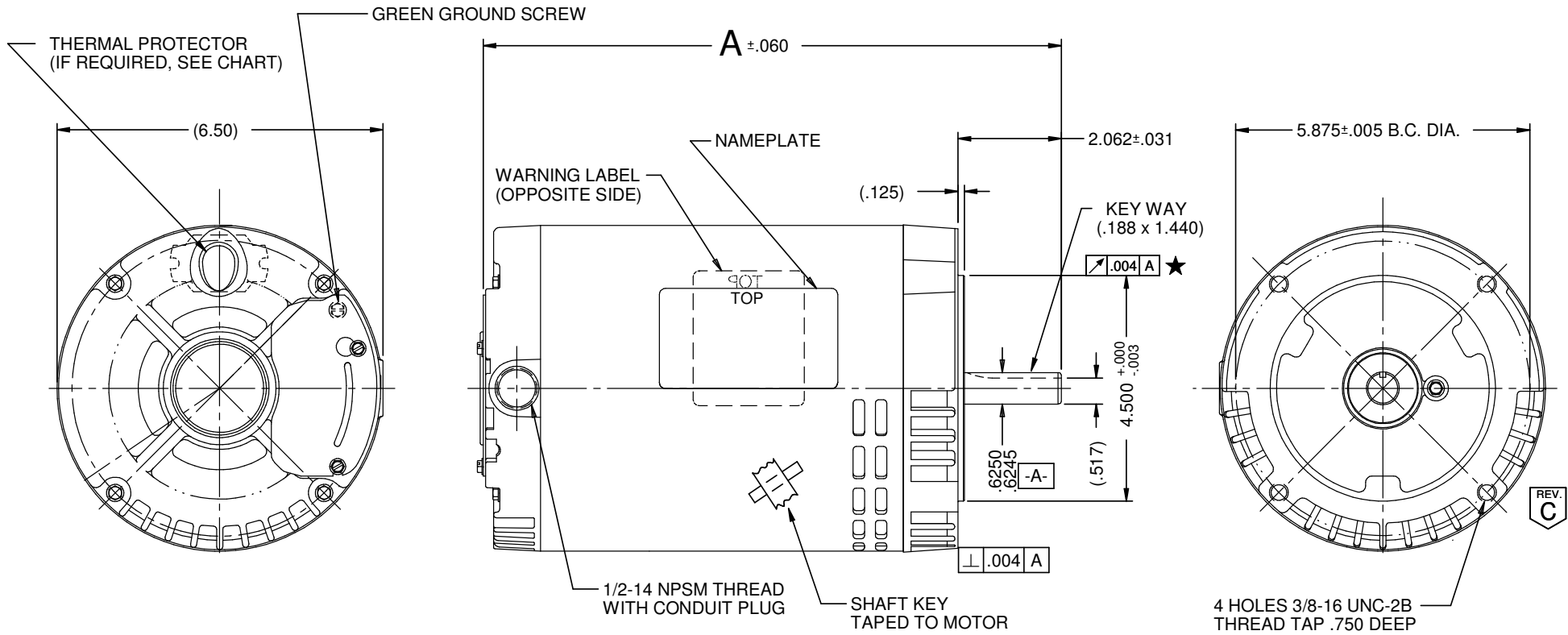


VAR	MODEL	CUSTOMER	CAT. NO.	A	B	C	D	HP	VOLTS	SF	AMPS	HZ	RPM	CONN VOLTS	PROT.	DESCRIPTION / REMARKS
001	P63FWS-1344	USEM	D34P2ACR	11.89	--	--	--	3/4	208-230/460	1.25	2.8-2.7/1.4	60	1725	--	NONE	N56, ODP.



NIDEC MOTOR CORPORATION 23-Jul-18

ROTATION-REVERSIBLE, TO REVERSE ROTATION INTERCHANGE ANY TWO LINE LEADS.

REFER TO S.E.I.M. 24-1

SCREW VIEW WAS UPDATED	REVISION RECORD FOR:	E31416
ISSUED BY:	ENGINEER APPROVED:	
D. VALLE	J. SALINAS	

TOLERANCES ON DIMENSIONS (UNLESS OTHERWISE SPECIFIED)	
INCHES .XX = ± .010 .XXX = ± .005	mm
ANGLES X° = ±1°	

NIDEC MOTOR CORPORATION			
INFORMATION DISCLOSED ON THIS DOCUMENT IS CONSIDERED PROPRIETARY AND SHALL NOT BE REPRODUCED OR DISCLOSED WITHOUT WRITTEN CONSENT OF NIDEC MOTOR CORPORATION			REVISION DATE: <b>23-JUL-18</b>
TITLE	CODE	ITEM NO.	REV
<b>CUSTOMER DETAIL DRAWING</b>	<b>V02</b>	<b>804338</b>	<b>C</b>
SHEET NUMBER		DWG SIZE	
1 OF 6		<b>B</b>	