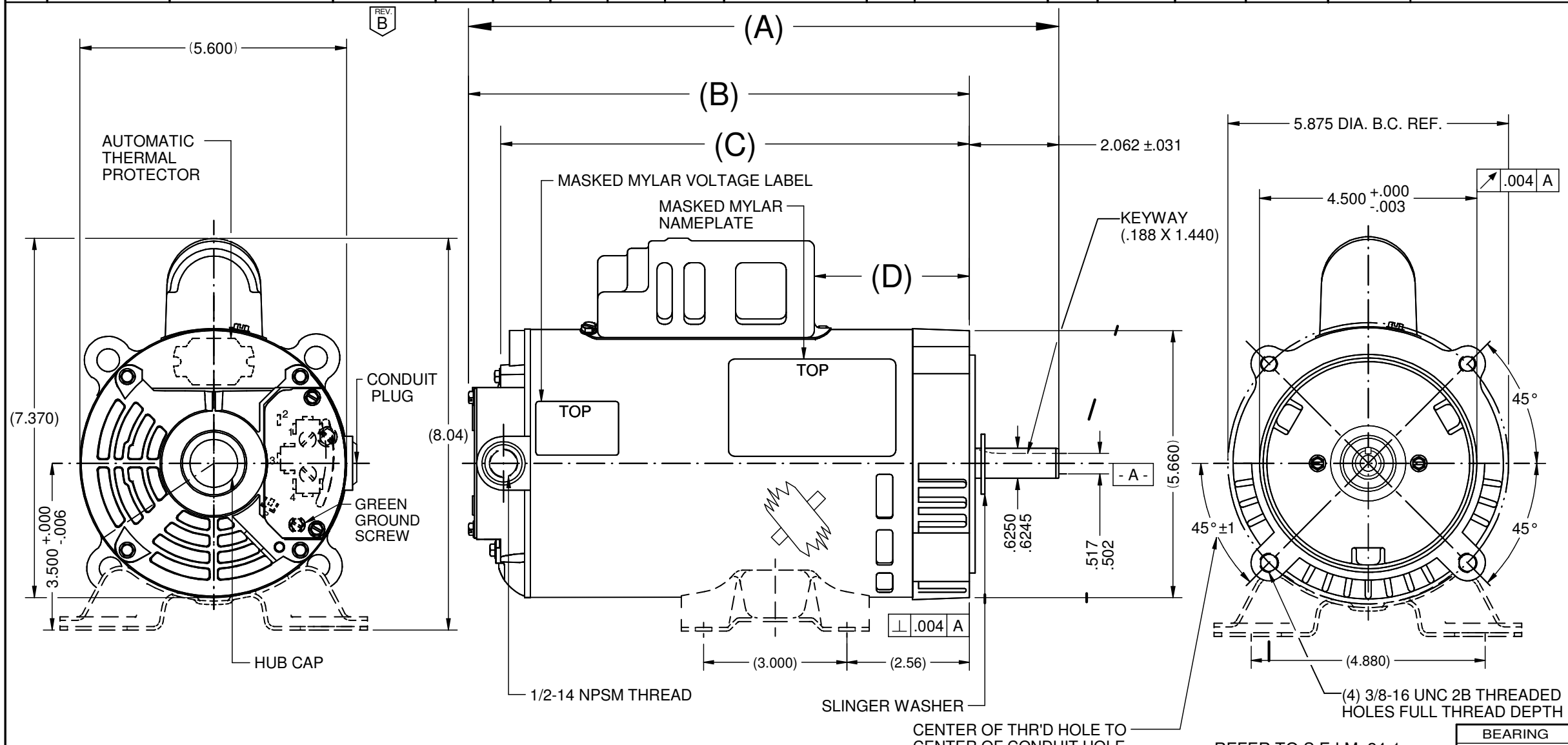


VAR	MODEL	CUSTOMER	CAT. NO.	A	B	C	D	HP	VOLTS	SF	AMPS	HZ	RPM	CONN VOLTS	PROTECTOR	BASE	DESCRIPTION / REMARKS
001	C55CXKAJ-4784	COMMERCIAL PUMPS	EC0752	11.92	9.86	9.13	2.65	3/4	208-230/115//220-230/110	1.5/1.0	5.4-5.2/10.4//6.0-6.4/12.0	60/50	3450/2850	230	AUTOMATIC	NO	CCW DRIVE END REV
002	C55CXKAK-4785	COMMERCIAL PUMPS	EC1002	12.17	10.11	9.38	2.65	1	208-230/115//220-230/110	1.4/1.0	6.7-6.4/12.8//7.4-7.8/14.8	60/50	3450/2850	230	AUTOMATIC	NO	CCW DRIVE END REV
003	C55JXKAH-4783	COMMERCIAL PUMPS	EC0502	11.17	9.11	8.38	2.65	1/2	115/208-230//110/220-230	1.6/1.0	8.2/4.2-4.1//9.8/4.9-5.2	60/50	3450/2850	115	AUTOMATIC	NO	CCW DRIVE END REV
004	C55JXKAG-4782	COMMERCIAL PUMPS	EC0332	10.83	8.77	8.13	2.65	1/3	115/208-230//110/220-230	1.75/1.0	6.2/2.9-3.1//7.4/3.7-4.0	60/50	3450/2850	115	AUTOMATIC	NO	CCW DRIVE END REV
005	C55JKAL-4786	COMMERCIAL PUMPS	EC0332B	10.83	8.77	8.13	2.65	1/3	115/208-230//110/220-230	1.75/1.0	6.2/2.9-3.1//7.4/3.7-4.0	60/50	3450/2850	115	AUTOMATIC	YES	CCW DRIVE END REV



NIDEC MOTOR CORPORATION 20-Sep-17		REVISION RECORD FOR: ECO: E29725		TOLERANCES ON DIMENSIONS (UNLESS OTHERWISE SPECIFIED)		NIDEC MOTOR CORPORATION			REVISION DATE: 20-SEP-17		
CHANGED CAT. NO IN VAR 002				INCHES .XX = ±.010 .XXX = ±.005		INFORMATION DISCLOSED ON THIS DOCUMENT IS CONSIDERED PROPRIETARY AND SHALL NOT BE REPRODUCED OR DISCLOSED WITHOUT WRITTEN CONSENT OF NIDEC MOTOR CORPORATION			REV B SHEET NUMBER 1 OF 5 DWG SIZE B		
ISSUED BY: D. VALLE		ENGINEER APPROVED: R. GIL		mm		TITLE: CUSTOMER DETAIL DRAWING			CODE: V02 ITEM NO. 804163		
				ANGLES X° = ±1°					REFER TO S.E.I.M. 24-1 BEARING BALL-BALL		