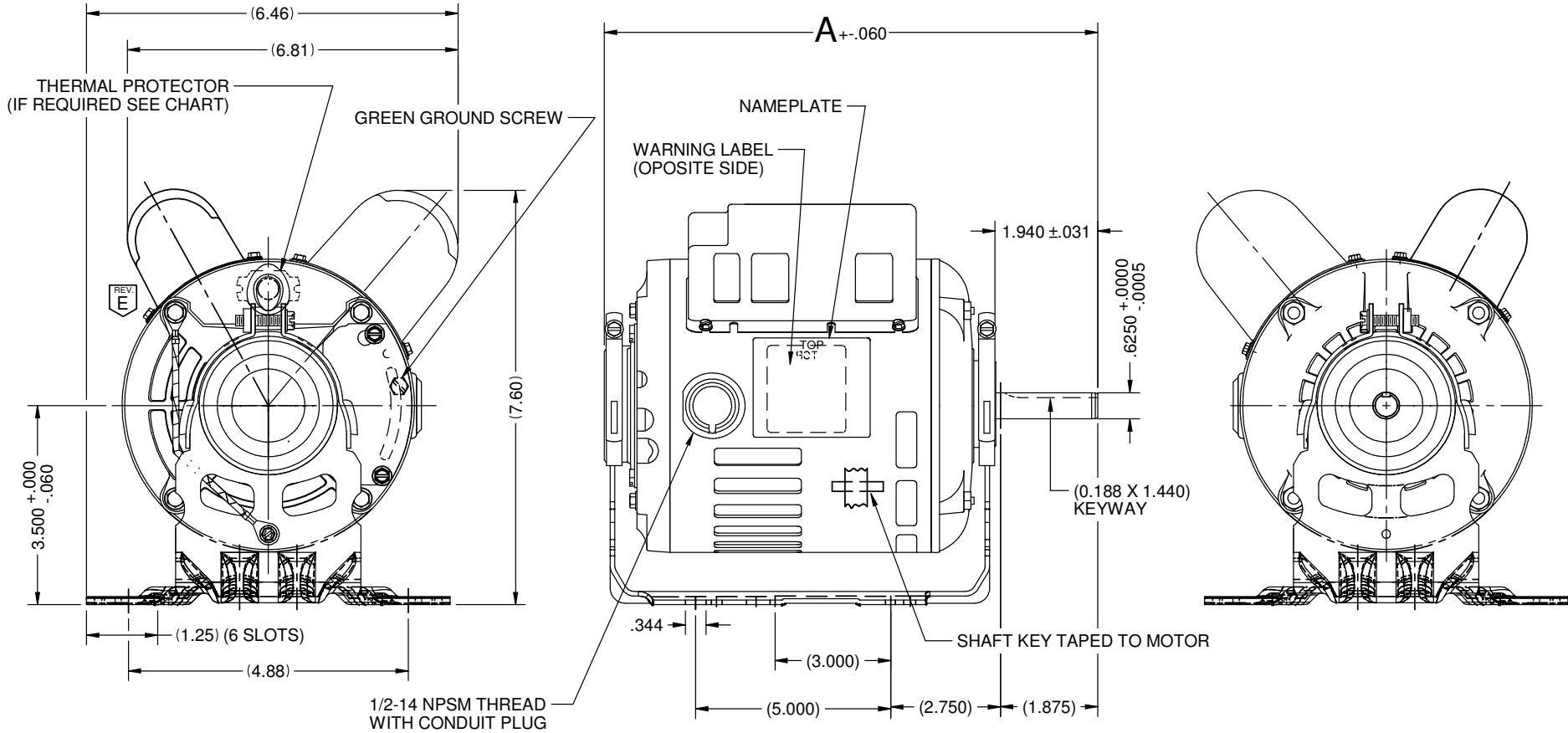


VAR	MODEL	CUSTOMER	CAT. NO.	A	B	C	D	HP	VOLTS	SF	AMPS	HZ	RPM	CONN VOLTS	PROT.	DESCRIPTION / REMARKS
001	T055CPM-1518	USEM	D12CP2PH9	11.308	-----	-----	-----	1/2	115/230	1.25	5.0/2.6	60	1725	230	NONE	N56H, ODP



NIDEC MOTOR CORPORATION 09-Apr-18

MOTOR IS CCW ROTATION LEAD END, TO REVERSE ROTATION INTERCHANGE BLUE WITH WHITE AND ORANGE WITH YELLOW REFER TO S.E.I.M. 24-1

REVISION RECORD FOR: ECO E30650	
CHANGED VIEW OF GROUND LEAD TO BEHIND OF THE BASE.	
ISSUED BY: C. LUGO	ENGINEER APPROVED: F. FLORES

TOLERANCES ON DIMENSIONS (UNLESS OTHERWISE SPECIFIED)	
INCHES .XX = $\pm .010$.XXX = $\pm .005$	mm
ANGLES X° = $\pm 1^\circ$	

NIDEC MOTOR CORPORATION		
INFORMATION DISCLOSED ON THIS DOCUMENT IS CONSIDERED PROPRIETARY AND SHALL NOT BE REPRODUCED OR DISCLOSED WITHOUT WRITTEN CONSENT OF NIDEC MOTOR CORPORATION		
TITLE: CUSTOMER DETAIL DRAWING		REVISION DATE: 13-APR-18
CODE: V02	ITEM NO.: 803491	REV: E
SHEET NUMBER: 1 OF 4		DWG SIZE: B