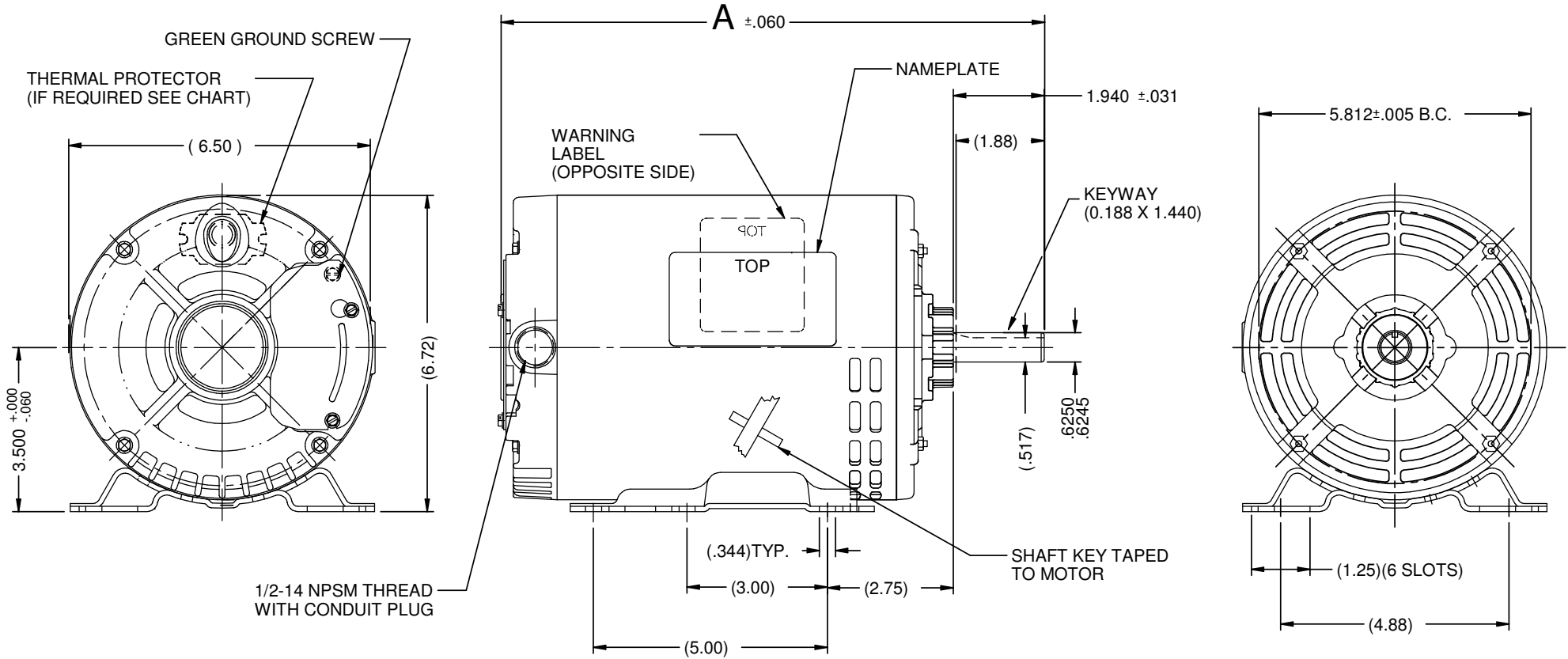


VAR	MODEL	CUSTOMER	CAT. NO.	A	B	C	D	HP	VOLTS	SF	AMPS	HZ	RPM	CONN VOLTS	PROT.	DESCRIPTION / REMARKS
001	P63AGU-1308	USEM	D1P2AH	12.39	----	----	----	1.0	208-230/460	1.15	3.2-3.0/1.5	60	1725	--	NONE	N56H, ODP
002	P63JZAHU-1333	USEM	D34PA2AH	11.89	----	----	----	3/4	208-230/460	1.25	2.3-2.2/1.16	60	1725	--	AUTO	N56H, ODP
003	P63AGT-1307	USEM	D12P2AH	11.39	----	----	----	1/2	208-230/460	1.25	1.99-1.9/.98	60	1725	--	NONE	N56H, ODP
004	P63FZC-1306	USEM	D2P2AH	12.89	----	----	----	2.0	208-230/460	1.15	6.6-6.6/3.3	60	1725	--	NONE	N56H, ODP
005	P63FTC-1355	USEM	D14P2AH	10.89	----	----	----	1/4	208-230/460	1.35	1.1-1.1/0.5	60	1725	--	NONE	N56H, ODP
006	P63GCK-1358	USEM	D13P1AH	10.89	----	----	----	1/3	208-230/460	1.35	1.7-1.8/0.9	60	3450	--	NONE	N56H, ODP
007	P63AJV-1362	USEM	D32P2AH	12.89	----	----	----	1.5	208-230/460	1.15	5.0-4.8/2.4	60&50	1725&1425	--	NONE	N56H, ODP
008	P63BBN-1405	USEM	D13P2AH	11.388	----	----	----	1/3	208-230/460	1.35	1.4-1.4/0.7	60&50	1725&1425	--	NONE	N56H, ODP



NIDEC MOTOR CORPORATION 23-Feb-18

REFER TO S.E.I.M. 24-1

REVISION RECORD FOR: ECO E30689	
UPDATED CRITICAL REQUIREMENT #1	
ISSUED BY: G. TREVIÑO	ENGINEER APPROVED: T. BOSSALLER

TOLERANCES ON DIMENSIONS (UNLESS OTHERWISE SPECIFIED)	
INCHES .XX = ±.010 .XXX = ±.005	mm
ANGLES X° = ±1°	

NIDEC MOTOR CORPORATION			
INFORMATION DISCLOSED ON THIS DOCUMENT IS CONSIDERED PROPRIETARY AND SHALL NOT BE REPRODUCED OR DISCLOSED WITHOUT WRITTEN CONSENT OF NIDEC MOTOR CORPORATION			
TITLE		CODE	REVISION DATE: 23-FEB-18
CUSTOMER DETAIL DRAWING		ITEM NO. 803206	SHEET NUMBER 1 OF 4
V02		F	DWG SIZE B