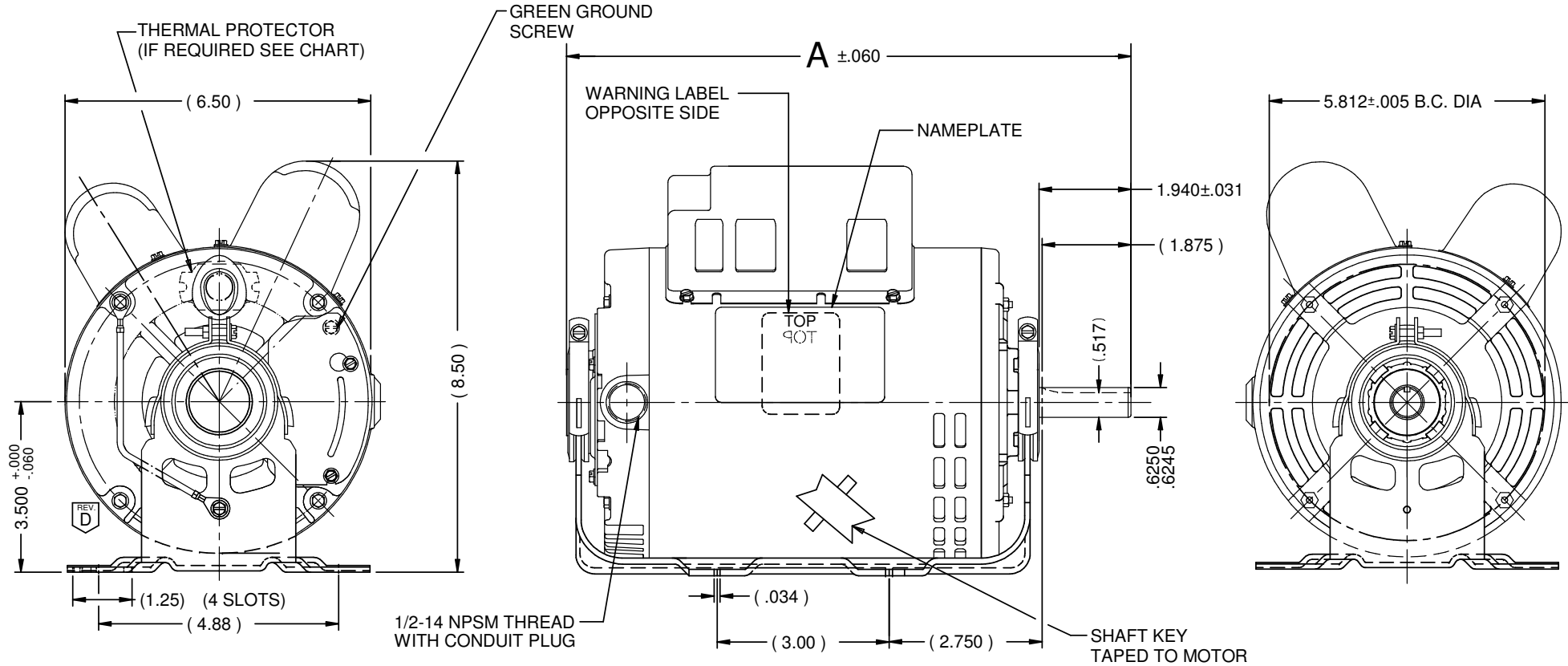


VAR	MODEL	CUSTOMER	CAT. NO.	A	B	C	D	HP	VOLTS	SF	AMPS	HZ	RPM	CONN VOLTS	PROT.	DESCRIPTION / REMARKS
001	T63CXCLB-2141	USEM	D1CPA2P9	12.320	-----	-----	-----	1.0	115/230	1.15	8.8/4.4	60	1725	230	AUTO	N56 ODP



NIDEC MOTOR CORPORATION 30-Oct-17

ROTATION: CCW SWITCH END REVERSIBLE, TO REVERSE ROTATION INTERCHANGE BLACK AND RED LEADS

REFER TO S.E.I.M. 24-1

REVISION RECORD FOR: ECO E29757		TOLERANCES ON DIMENSIONS (UNLESS OTHERWISE SPECIFIED)		NIDEC MOTOR CORPORATION			REVISION DATE: 31-OCT-17	
CHANGED DRAWING TO SHOW THAT THE GROUND WIRE IS ROUTED FROM INSIDE THE BASE		INCHES .XX = ± .010 .XXX = ± .005		INFORMATION DISCLOSED ON THIS DOCUMENT IS CONSIDERED PROPRIETARY AND SHALL NOT BE REPRODUCED OR DISCLOSED WITHOUT WRITTEN CONSENT OF NIDEC MOTOR CORPORATION			REV D	
ISSUED BY: J. ALVARADO		ENGINEER APPROVED: R. CRUZ		TITLE: CUSTOMER DETAIL DRAWING			SHEET NUMBER: 1 OF 4	
		ANGLES X° = ± 1°		CODE: V02			ITEM NO.: 803174	
							DWG SIZE: B	