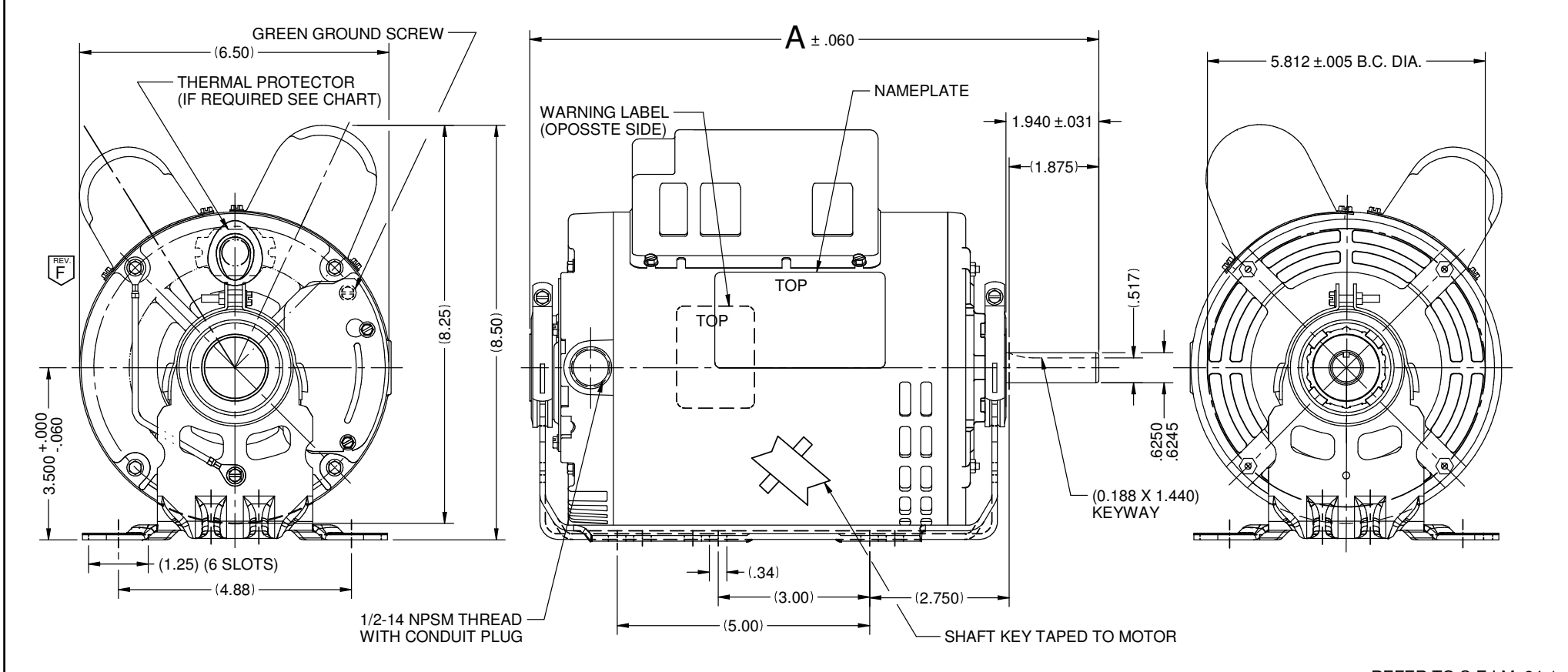


VAR	MODEL	CUSTOMER	CAT. NO.	A	B	C	D	HP	VOLTS	SF	AMPS	HZ	RPM	CONN VOLTS	PROT.	DESCRIPTION / REMARKS
001	T063CJK-2139	USEM	D1CP2PH9	12.32	-----	-----	-----	1.0	115/230	1.15	8.8/4.4	60	1725	---	NONE	N56H, ODP
002	T63CPB-2164	USEM	D1CP1PH9	13.32	-----	-----	-----	1.0	115/230	1.25	9.3/4.3	60	3450	---	NONE	N56H, ODP
003	T63CXCPH-2170	USEM	D1CPA1PH9	13.32	-----	-----	-----	1.0	115/230	1.25	9.3/4.3	60	3450	---	AUTO	N56H, ODP
004	T63CXCPU-2181	USEM	D34CPA1PH9	11.82	-----	-----	-----	3/4	115/230	1.25	7.0/3.6	60	3450	230	AUTO	N56H, ODP
005	T63CXCRJ-2196	USEM	D34CPA3PH9	13.80	-----	-----	-----	3/4	115/230	1.15	6.6/3.4	60	1140	---	AUTO	N56H, ODP
006	T63CXCRJ-2194	USEM	D32CPA1PH9	13.32	-----	-----	-----	1.5	115/230	1.15	13.3/6.7	60	3450	---	AUTO	N56H, ODP
007	T63CXCRK-2195	USEM	D2CPA1PH9	13.814	-----	-----	-----	2.0	115/230	1.15	17.3/8.7	60	3450	230	AUTO	N56H, ODP
008	T63CSN-2220	USEM	D32CP1PH9	13.314	-----	-----	-----	1.5	115/230	1.15	13.3/6.7	60	3450	230	NONE	N56H, ODP
009	T63CTA-2235	USEM	D2CP1PH9	13.81	-----	-----	-----	2.0	115/230	1.15	17.3/8.7	60	3450	---	NONE	N56H, ODP
010	T63CSV-2226	USEM	D2CP1PH9	13.82	-----	-----	-----	2.0	115/230	1.15	17.3/8.7	60	3450	---	NONE	N56H, ODP



NIDEC MOTOR CORPORATION 09-Apr-18 MOTOR IS CCW ROTATION LEAD END, TO REVERSE ROTATION INTERCHANGE RED AND BLACK LEADS REFER TO S.E.I.M. 24-1

<b>REVISION RECORD FOR:</b> ECO E30650 CHANGED VIEW OF GROUND LEAD TO BEHIND OF THE BASE.		<b>TOLERANCES ON DIMENSIONS (UNLESS OTHERWISE SPECIFIED)</b> INCHES .XX = ± .010 .XXX = ± .005 ANGLES X° = ± 1°		<b>NIDEC MOTOR CORPORATION</b> INFORMATION DISCLOSED ON THIS DOCUMENT IS CONSIDERED PROPRIETARY AND SHALL NOT BE REPRODUCED OR DISCLOSED WITHOUT WRITTEN CONSENT OF NIDEC MOTOR CORPORATION			REVISION DATE: <b>13-APR-18</b>	
ISSUED BY:	ENGINEER APPROVED:	TITLE		CODE	ITEM NO.	REV	SHEET NUMBER	DWG SIZE
C. LUGO	F. FLORES	CUSTOMER DETAIL DRAWING		V02	802982	F	1 OF 4	B