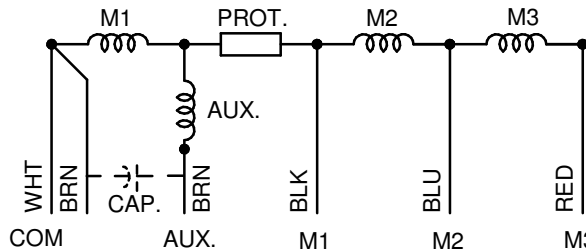
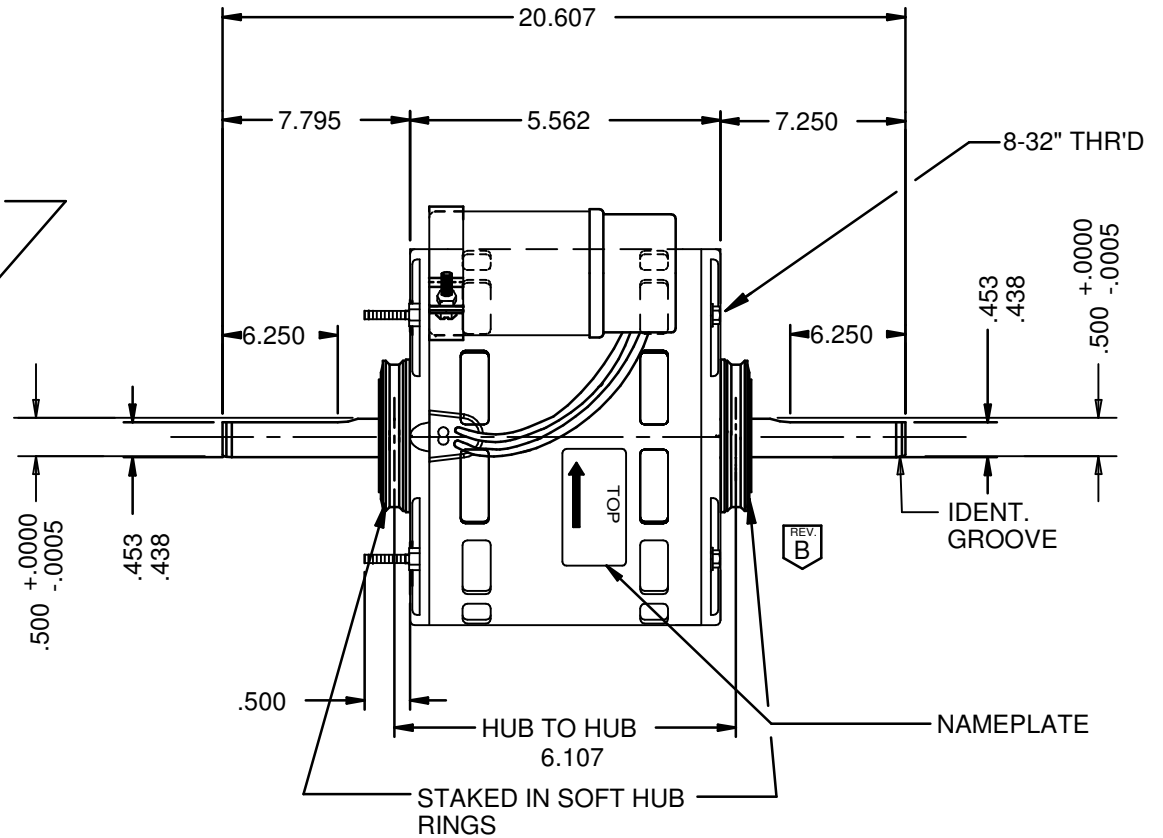


0.500" STRIPPED

GROUND LEAD  
#16 GRN/YELL= 30.000"  
#10 RING

4 LEADS # 18,.031 THICK INSUL.  
TO EXTEND FROM SHELL AS FOLLOWS:  
WHT=36.000 +2 -0 , BLK=36.000 +2 -0  
BLU=36.000 +2 -0 , RED=36.000 +2 -0



NIDEC MOTOR CORPORATION 11-Feb-15

MODEL	REF	CUSTOMER	HP	VOLTS	AMPS	HZ	RPM	ROTATION	CAP
K55HXDUT-1259	C33790	NIDEC MOTOR CANADA CORPORATION	3/4	208-230	5.0	60	1075	C.W. LEAD END	7.5MFD 370V
									CUSTOMER PN
									1894

SHEET NUMBER 1 OF 1	REV B	REVISION RECORD FOR: D2736-00	
		ADDED ARROW IN NAMEPLATE	
REVISION DATE			
11-FEB-15			

INFORMATION DISCLOSED ON THIS DOCUMENT IS CONSIDERED PROPRIETARY AND SHALL NOT BE REPRODUCED OR DISCLOSED WITHOUT WRITTEN CONSENT OF NIDEC MOTOR CORPORATION

**NIDEC MOTOR CORPORATION**

ISSUED BY A. SANCHEZ	REVIEWED BY M. GUZMAN	ENGINEER APPROVED J.J. JUAREZ
-------------------------	--------------------------	----------------------------------

TITLE ASSEMBLED VIEW			CODE V01	ITEM NO. 792374	SIZE A
-------------------------	--	--	-------------	--------------------	-----------