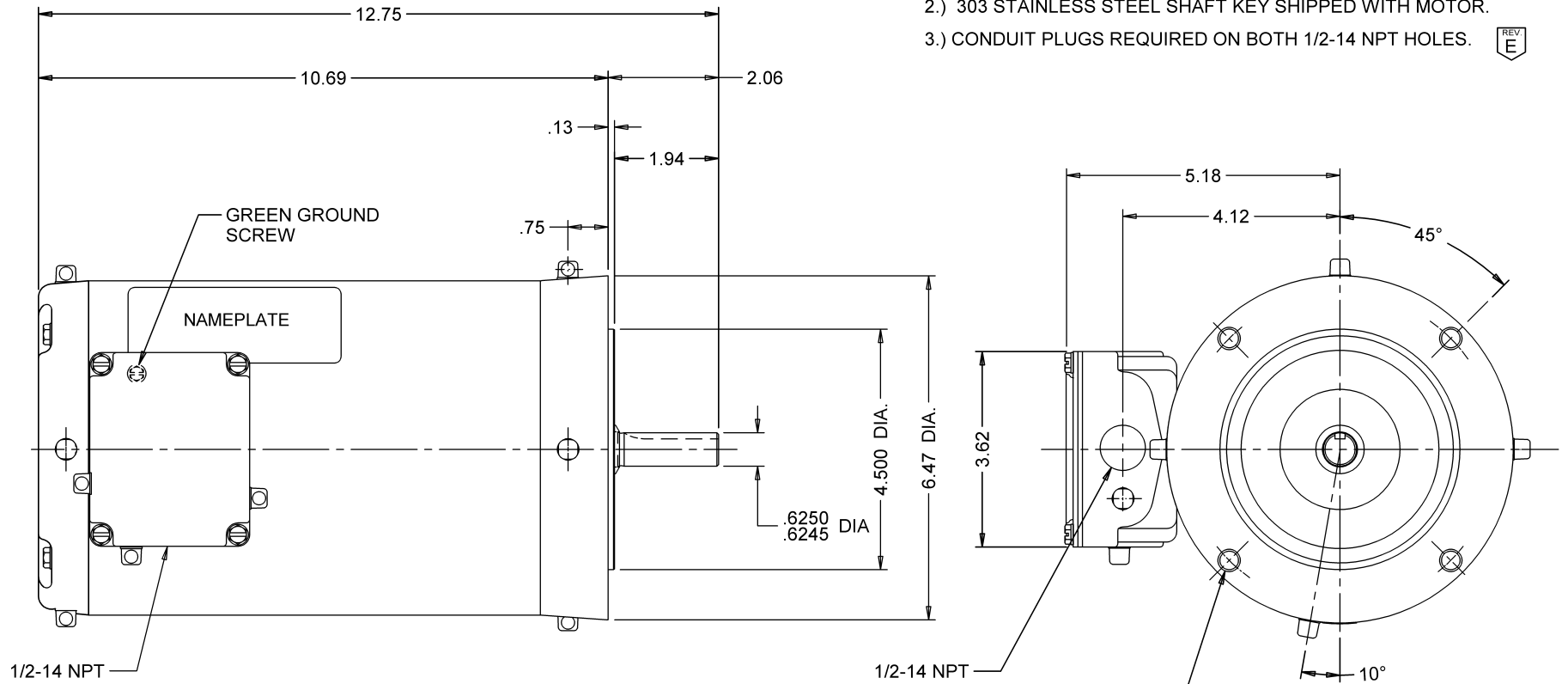


NOTES:

- 1.) (11) 1/4-18 PLASTIC DRAIN PLUGS; 4 IN C-FACE  
4 IN OPPOSITE SHAFT END ENDSHIELD AND 3 IN CONDUIT BOX.
- 2.) 303 STAINLESS STEEL SHAFT KEY SHIPPED WITH MOTOR.
- 3.) CONDUIT PLUGS REQUIRED ON BOTH 1/2-14 NPT HOLES.

REV  
E



3/8-16 UNC-2B .62 DEEP  
4 HOLES REQUIRED ON A  
5.875 DIA. BOLT CIRCLE

|            |             |
|------------|-------------|
| BEARING    | PROTECTOR   |
| BALL       | NONE        |
| ROTATION   | CUSTOMER PN |
| REVERSIBLE | WDP12S3DCR  |

|               |     |   |                   |             |                 |    |      |
|---------------|-----|---|-------------------|-------------|-----------------|----|------|
| MODEL         | REF | CUSTOMER                                | HP                | VOLTS       | AMPS            | HZ | RPM  |
| P63ERK-3838   |     | USEM                                    | 1/2               | 208-230/460 | 2.2-2.2<br>/1.1 | 60 | 1140 |
| SHEET NUMBER  | REV | REVISION RECORD FOR: C7925-00           |                   |             |                 |    |      |
| 1 OF 1        | E   | ADD NOTE #3<br>UPDATE ENGINEER APPROVED |                   |             |                 |    |      |
| REVISION DATE |     |   |                   |             |                 |    |      |
| 08-JUL-13     |     |   |                   |             |                 |    |      |
| ISSUED BY     |     | REVIEWED BY                             | ENGINEER APPROVED |             |                 |    |      |
| B. RUIZ       |     | V. RIVERA                               | T. BOSSALLER      |             |                 |    |      |

INFORMATION DISCLOSED ON THIS DOCUMENT  
IS CONSIDERED PROPRIETARY AND SHALL NOT BE  
REPRODUCED OR DISCLOSED WITHOUT WRITTEN  
CONSENT OF NIDEC MOTOR CORPORATION

**NIDEC MOTOR  
CORPORATION**

ALL DIMENSIONS ARE FOR REFERENCE ONLY UNLESS TOLERANCE IS GIVEN

TITLE  
**ASSEMBLED VIEW**

CODE  
**V01**

ITEM NO.  
**760478**

SIZE  
**B**