

AUTOMATIC  
RESET  
THERMAL  
PROTECTOR

ALL LEADS TO EXIT INTO CONDUIT BOX  
AND EXTEND BEYOND THE SHELL  
5.000 ± 1.000 & TO BE STRIPPED .750

VAR	MODEL	CATALOG NO.	A	BASE REQUIREMENT	OUTDOOR LABEL REQUIREMENT
001	C63ZZHMF-5035	EU09	13.097	REMOVABLE N56	NO
002	C63CXHMT-5046	EU07	12.597	REMOVABLE N56	NO
003	C63CXHMS-5045	EU05	12.347	REMOVABLE N56	NO
004	C63JXHMR-5044	EU03	11.847	REMOVABLE N56	NO
005	C63CXHNR-5066	EU06	11.847	REMOVABLE N56	NO

SEE CHART FOR  
BASE REQUIREMENT  
(IF REQ'D)

STD N56 BASE SHOWN  
(SEE PAGE 2 FOR VIEW  
OF N56H BASE)

SHEET NUMBER	REV	REVISION RECORD FOR: ECO E31424		
1 OF 2	F	CHANGED SCREW VIEW TO S05820750 (SCREW WITHOUT SLOT).		
REVISION DATE				
10-JUL-18				
ISSUED BY	REVIEWED BY	ENGINEER APPROVED		
G. ISASSI	J. SALINAS	R. GIL		

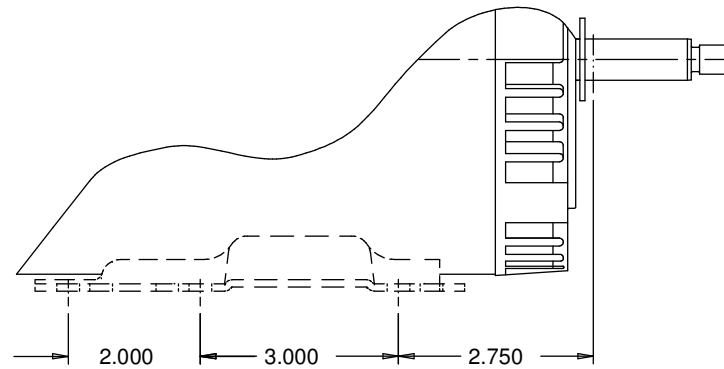
INFORMATION DISCLOSED ON THIS DOCUMENT  
IS CONSIDERED PROPRIETARY AND SHALL NOT BE  
REPRODUCED OR DISCLOSED WITHOUT WRITTEN  
CONSENT OF NIDEC MOTOR CORPORATION

**NIDEC MOTOR  
CORPORATION**

ALL DIMENSIONS ARE FOR REFERENCE ONLY UNLESS TOLERANCE IS GIVEN

TITLE		CODE	ITEM NO.	SIZE
ASSEMBLED VIEW		V01	745733	B

VAR	MODEL	CATALOG NO.	A	BASE REQUIREMENT	OUTDOOR LABEL REQUIREMENT
006	C63JXHNH-5057	EU02	11.097	REMOVABLE N56	NO
007	C63CXHNJ-5058	EU04	11.347	REMOVABLE N56	NO
008	C63ZZHNK-5059	EU08	12.847	REMOVABLE N56	NO
009	C63JXIMP-5043	EU01	11.847	REMOVABLE N56	YES



PARTIAL VIEW  
SHOWING N56H BASE

SHEET NUMBER 2 OF 2	REV <b>F</b>	REVISION RECORD FOR: <b>ECO E31424</b>		INFORMATION DISCLOSED ON THIS DOCUMENT IS CONSIDERED PROPRIETARY AND SHALL NOT BE REPRODUCED OR DISCLOSED WITHOUT WRITTEN CONSENT OF NIDEC MOTOR CORPORATION	<b>NIDEC MOTOR CORPORATION</b>
	CHANGED SCREW VIEW TO S05820750 (SCREW WITHOUT SLOT), IN PAGE #1.				
REVISION DATE <b>10-JUL-18</b>				ALL DIMENSIONS ARE FOR REFERENCE ONLY UNLESS TOLERANCE IS GIVEN	
ISSUED BY <b>G. ISASSI</b>	REVIEWED BY <b>J. SALINAS</b>	ENGINEER APPROVED <b>R. GIL</b>	TITLE <b>ASSEMBLED VIEW</b>		CODE <b>V01</b>
					ITEM NO. <b>745733</b>
					SIZE <b>B</b>