

VAR	MODEL	CATALOG NO.	A	FACTORY WIRED FOR	BASE REQUIREMENT	HIGH EFFICIENCY LABEL REQ'D
001	C63CXHC-4992	EU1502	12.874	HIGH VOLTAGE	NO	NO
002	C63CXHZ-5009	EU1002B	12.374	HIGH VOLTAGE	REMOVABLE N56	YES
003	C63CXHM-5021	EU0752B	12.124	HIGH VOLTAGE	REMOVABLE N56	NO
004	C63CXHN-5022	EU1502B	12.874	HIGH VOLTAGE	REMOVABLE N56H	YES
005	C63CXHW-5027	EU1004	12.124	HIGH VOLTAGE	REMOVABLE N56	YES

SHEET NUMBER	REV	REVISION RECORD FOR: C6279-00
1 OF 2	C	CHANGED POSITION OF "VOLTAGE LABEL"
REVISION DATE		
07-SEP-12		
ISSUED BY	REVIEWED BY	ENGINEER APPROVED
B. ANDRADE	O. CERDA	O. CERDA

INFORMATION DISCLOSED ON THIS DOCUMENT IS CONSIDERED PROPRIETARY AND SHALL NOT BE REPRODUCED OR DISCLOSED WITHOUT WRITTEN CONSENT OF NIDEC MOTOR CORPORATION

NIDEC MOTOR CORPORATION

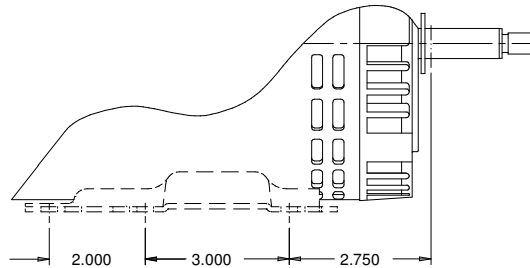
ALL DIMENSIONS ARE FOR REFERENCE ONLY UNLESS TOLERANCE IS GIVEN

NIDEC MOTOR CORPORATION 12-Sep-12

ASSEMBLED VIEW

TITLE	CODE	ITEM NO.	SIZE
ASSEMBLED VIEW	V01	744080	B

VAR	MODEL	CATALOG NO.	A	FACTORY WIRED FOR	BASE REQUIREMENT	HIGH EFFICIENCY LABEL REQ'D
006	C63CXHLT-5026	EU0754	11.374	HIGH VOLTAGE	REMOVABLE N56	NO
007	C63JXHLR-5025	EU0504	10.874	LOW VOLTAGE	REMOVABLE N56	YES
008	C63JXHLR-5024	EU0334	10.824	LOW VOLTAGE	REMOVABLE N56	YES
009	C63CXHLL-5020	EU0502B	11.624	LOW VOLTAGE	REMOVABLE N56	NO
010	C63JXHLK-5019	EU0332B	11.374	LOW VOLTAGE	REMOVABLE N56	NO



PARTIAL VIEW
SHOWING N56H BASE

SHEET NUMBER 2 OF 2	REV C	REVISION RECORD FOR: C6279-00		INFORMATION DISCLOSED ON THIS DOCUMENT IS CONSIDERED PROPRIETARY AND SHALL NOT BE REPRODUCED OR DISCLOSED WITHOUT WRITTEN CONSENT OF NIDEC MOTOR CORPORATION	NIDEC MOTOR CORPORATION <small>ALL DIMENSIONS ARE FOR REFERENCE ONLY UNLESS TOLERANCE IS GIVEN</small>	
	REVISION DATE 07-SEP-12	ISSUED BY B. ANDRADE	REVIEWED BY O. CERDA			
NIDEC MOTOR CORPORATION 12-Sep-12				TITLE ASSEMBLED VIEW	CODE V01	ITEM NO. 744080
V01_NMCB (MAR 2011)						SIZE B

SOLIDEDGE