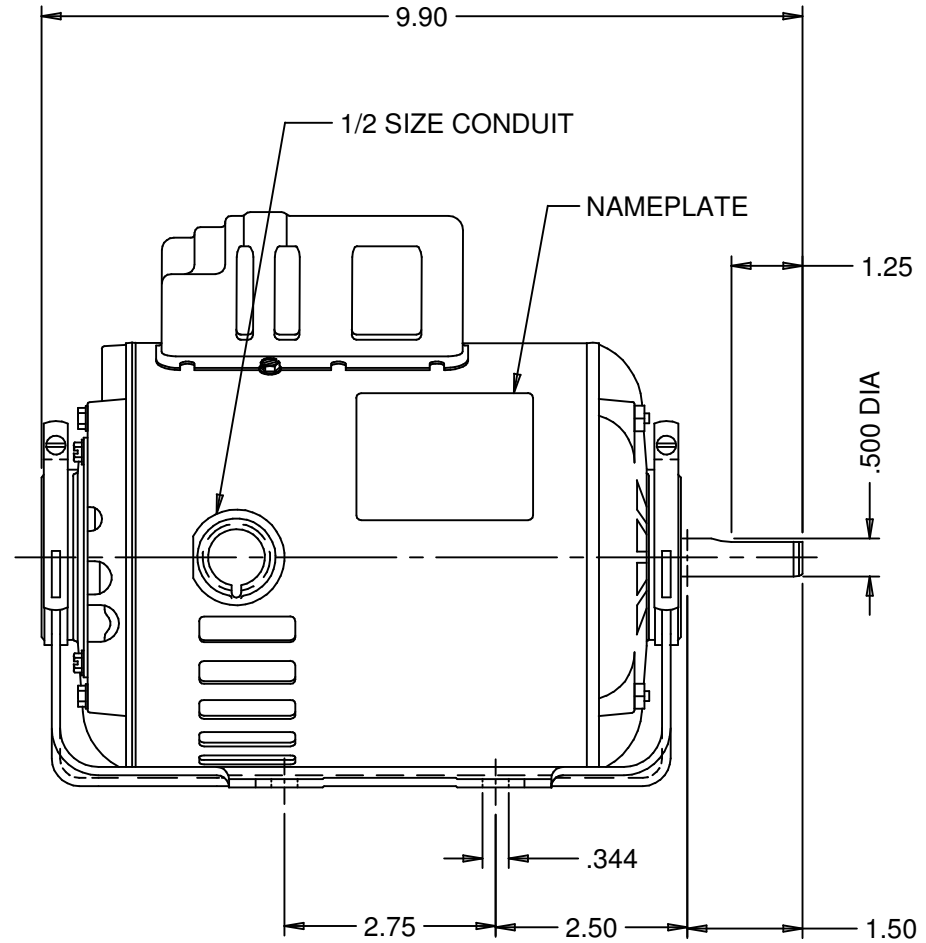
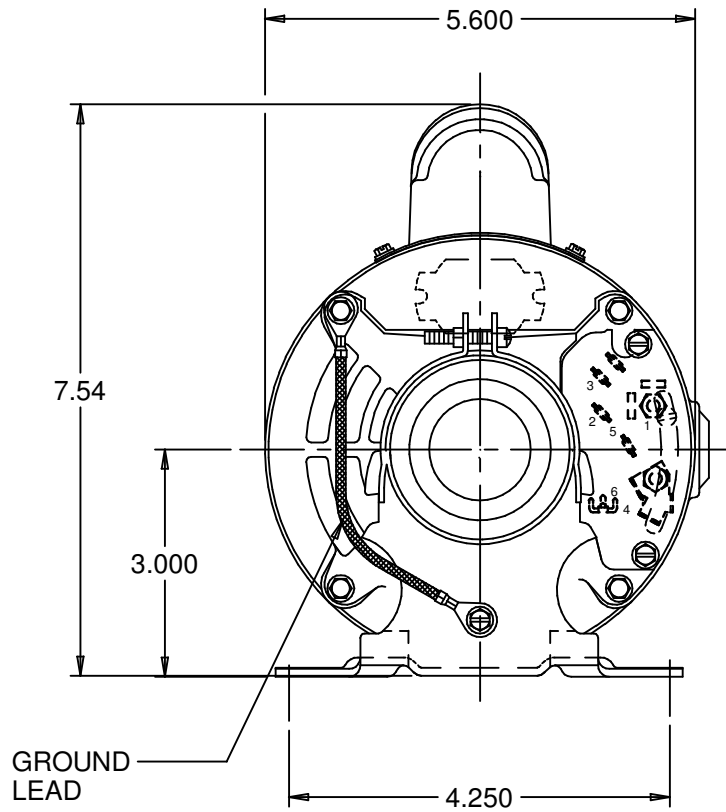


.19 SQ. SHAFT KEY
SHAFT ADAPTER



NIDEC MOTOR CORPORATION 09-Oct-12

MODEL	REF	CUSTOMER	HP	VOLTS	AMPS	HZ	RPM	ROTATION	CUSTOMER PN
CA55JXSEE-2508	-	STANDARD	1/2	115/208-230	8.6/4.3	60	3450	CCW LEAD END REV	298

SHEET NUMBER	REV	REVISION RECORD FOR: C6401-00	
1 OF 1	G	UPDATED ENGINEER APPROVED TO B. GAITAN.	
REVISION DATE			
09-OCT-12			
ISSUED BY	REVIEWED BY	ENGINEER APPROVED	REV
R. MORALES	M. LARGENT	B. GAITAN	G

INFORMATION DISCLOSED ON THIS DOCUMENT IS CONSIDERED PROPRIETARY AND SHALL NOT BE REPRODUCED OR DISCLOSED WITHOUT WRITTEN CONSENT OF NIDEC MOTOR CORPORATION

ALL DIMENSIONS ARE FOR REFERENCE ONLY UNLESS TOLERANCE IS GIVEN

TITLE	CODE	ITEM NO.	SIZE
ASSEMBLED VIEW	V01	253283	A

NIDEC MOTOR CORPORATION	