



Features & Options

- Waterproof, Copper-Cased Element
- Continuous Averaging (RTD models only)
- Averaging Lengths: 2', 4' and 8'

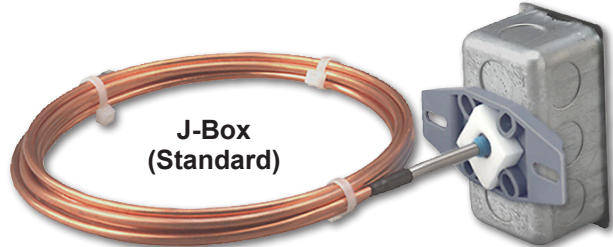
Submersible Averaging Units feature closed cell foam to seal the probe insertion hole and absorb vibration and mounting tabs allow for easy installation. All Units have etched Teflon leadwires and encapsulated sensors to create a watertight package that can withstand high humidity and perform in the real world.

Averaging probes should be used wherever there is a chance for stratified layers of hot and cold water. Averaging probes are made of bendable copper tubing and measure temperature along their entire length.

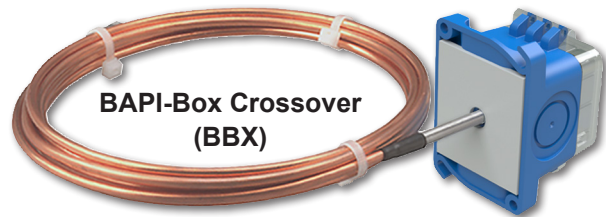
These units come standard with a 2"x4" steel J-Box but are also available with no box or the new BAPI-Box Crossover enclosure.



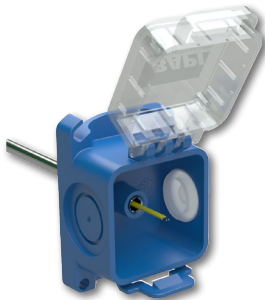
No Box
(NB)



J-Box
(Standard)



BAPI-Box Crossover
(BBX)



The New BAPI-Box Crossover Enclosure

The new BAPI-Box Crossover features a hinged cover with thumb latch for easy termination. A pierceable knockout plug is available for the open port. See the Accessories section for more info.

(Units shown with knockplug plug sold separately.)



Specifications

Environmental Operation Range:

Temperature:

BAPI-Box Crossover: -40 to 85 °C

Other Enclosures: -40 to 100 °C

Humidity: 0 to 100%, non-condensing

Sensing Element:

Thermistor or RTD (See Sensors Section for Specs.)

Probe Material:

Bendable Copper, 3/16" dia. with 4" sleeve

Enclosure Material:

Junction Box: Galvanized Steel

BAPI-Box Crossover:

Cover: Polycarbonate, UL94 V-0 • Base: Nylon, UL94 HB0

Enclosure Rating:

Junction Box: IP20, NEMA 1

BAPI-Box Crossover (BBX):

IP10, NEMA 1

IP44 with knockout plug in open port

Encl. Dimensions: H x W x D

BAPI-Box Crossover:

3.1 x 2.2 x 1.9" (79 x 56 x 49mm)

Junction Box

4.2 x 3.9 x 1.94" (106 x 98.4 x 49mm)

(For enclosure dimension drawings, see the end of the section.)





Use the Option Selection Guide below to create your custom part number. Replace the number and parenthesis with the designator for each selection. Skip the designator and dashes for optional selections that are not required in your configuration.

Submersible Averaging Sensor Option Selection Guide

BA/ (#1) - (#2) - (#3) - (#4)

#1: Temperature Sensor (required)

- 1.8K1.8K Thermistor
- 3K3K Thermistor
- 10K-210K-2 Thermistor
- 10K-310K-3 Thermistor
- 10K-3[11K].....10K-3[11K] Thermistor
- 20K20K Thermistor
- 1K[375]1K Platinum RTD (375 curve)
- 1K1K Platinum RTD (385 curve)

Transmitters below require a BAPI-Box Crossover Enclosure

- T1K[32 TO 212F]1K Plat. RTD Transmitter, 4 to 20 mA Output, 32 to 212°F Range
- T1K[20 TO 120F]1K Plat. RTD Transmitter, 4 to 20 mA Output, 20 to 120°F Range
- T1K[0 TO 100F]1K Plat. RTD Transmitter, 4 to 20 mA Output, 0 to 100°F Range
- T1K[0 TO 100C]1K Plat. RTD Transmitter, 4 to 20 mA Output, 0 to 100°C Range
- T1K[-7 TO 49C]1K Plat. RTD Transmitter, 4 to 20 mA Output, -7 to 49°C Range
- T1K[-18 TO 38C]1K Plat. RTD Transmitter, 4 to 20 mA Output, -18 to 38°C Range

Matched Transmitters are also available. Contact your BAPI representative for ordering.

#2: Probe Type and Length (required)

- SA-2'Submersible Averaging, 2' (0.6m) length
- SA-4'Submersible Averaging, 4' (1.2m) length
- SA-8'Submersible Averaging, 8' (2.4m) length

#3: Enclosure and Lead Length (optional, J-Box comes standard)

- BBXBAPI-Box Crossover (IP10, NEMA 1)
- NB.....No Box (comes with 6" Etched Teflon Leads)

#4: Test & Balance or Terminal Strip (optional, requires a BAPI-Box Crossover enclosure)

- TBTest & Balance Switch
- TSTerminal Strip Connection (The \$7 does not apply to T1K transmitter units)

Certain sensor types or lengths may not be available at this time. Please contact your BAPI representative for pricing and availability before ordering.

Additional options are available for these units but not shown in this Selection Guide. Contact your BAPI representative for the complete list of options.

Example Number: BA/ (10K-2) - (SA-2') - (BBX) - ()

Actual Number (with parenthesis removed): BA/10K-2-SD-2'-BBX

Description: 10K-2 Thermistor, Submersible Averaging Sensor, BAPI-Box Crossover Enclosure

Your Number: BA/

Gray shaded items follow the Buy and Resale Multiplier.

