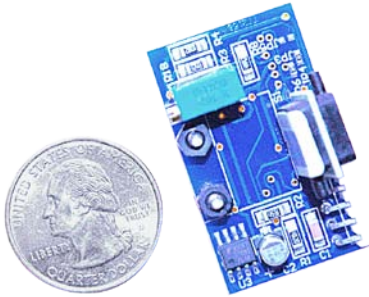


Series 855

Board-Mountable Pressure Transducer



Features & Applications

- Excellent long-term stability
- Fully compensated and signal conditioned
- Optional cable available for low-cost stand-alone applications (consult factory for options)
- Great for applications such as fume hoods, clean rooms, VAV, duct static and medical
- Virtually no position sensitivity
- Pressure range calibrated to customer's specific requirement
- Custom voltage outputs available
- Direct to board solder connection available for easy integration into OEM products

Specifications

Accuracy*:	+/-1% FSO
Stability:	+/-0.5% FSO/yr
Thermal Effects:	+/-0.075% FSO/°C
Overpressure:	1-10"WC = 100"WC 11-20"WC = 10x rated pressure 21-30" WC = 5x rated pressure Over 30" WC = 45 PSI
FSO Pressure Range:	0/0.25"WC up to 0/15PSI (bi-directional ranges available)
Compensated Range:	10 to 50°C
Adjustments:	Offset, 60% of FSO minimum
Media:	Non-corrosive, non-ionic gases
Operating Humidity:	90% RH non-condensing
Operating Temp:	-25° to 70°C
Input Supply:	12-24 VDC
Supply Current:	<10mA
Load Resistance:	2KΩ minimum
Output Signal:	1-5VDC, 1-6VDC, 1-10VDC** (call for custom outputs)
Electrical Connections:	0.025" square pins on 0.1" centers (5) – Board-Mountable***
Pressure Connections:	Barbed fitting for 1/8" ID tubing
Dimensions:	Approx. 1.50" x 1.35" x 0.9" (3.81cm x 3.43cm x 2.29cm)

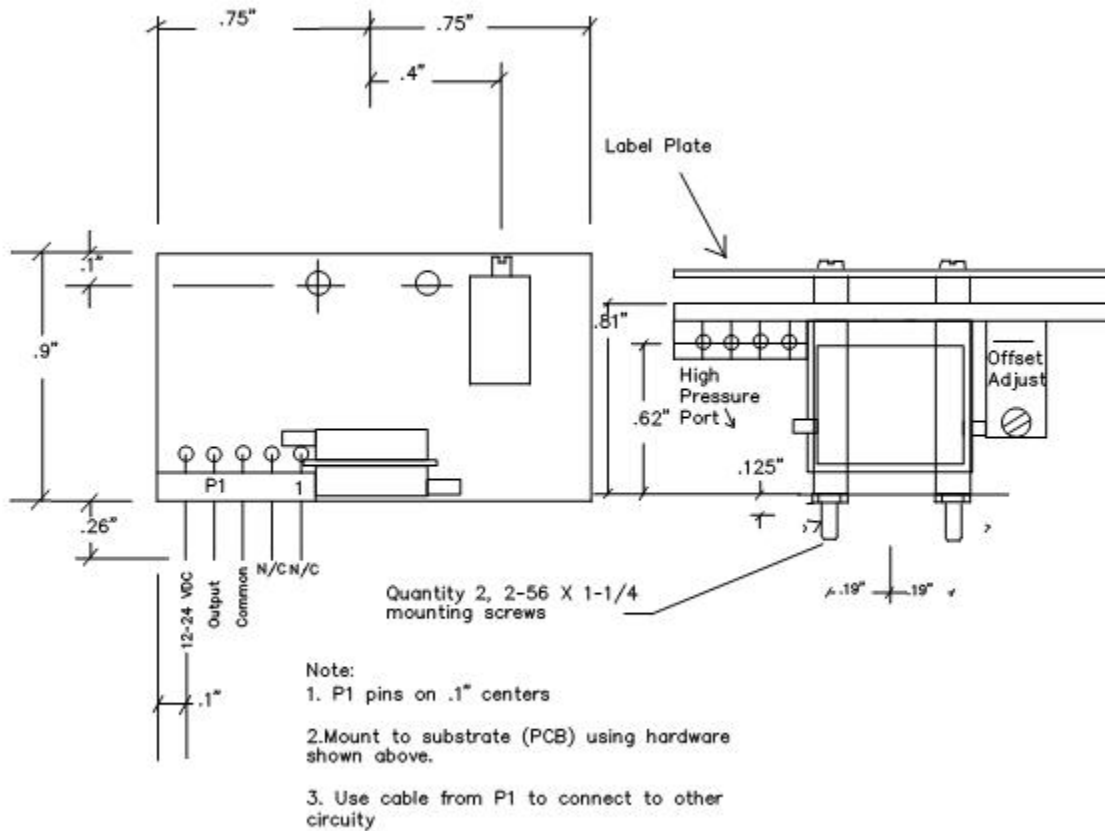
* Includes non-linearity hysteresis and non-repeatability at a fixed temperature

** 18-24VDC input required for 1-10VDC output

*** Direct-to-board solder connection and optional cable available upon request

Note: Controller Sensors LLC reserves the right to make changes at any time to any products herein. Controller Sensors LLC does not assume any liability arising out of the application or use of any product described herein, neither does it convey any license under its patent rights nor the rights of others.

Physical Drawing



How to Order

A typical order number consists of the **model** number, **type**, **output signal**, **pressure range** and **calibration pressure**.

<u>Model</u>	<u>Type</u>	<u>Output Signal</u>	<u>FSO Pressure Range</u>	<u>Calibration Pressure</u>
855	D = Differential or Gage*	0.....1 to 5 volts 1.....1 to 6 volts 2.....1 to 10 volts** 5.....Custom Output	0.....0.25"WC to 5"WC 1.....>5"WC to 13" WC 2.....>0.5PSI to 1PSI 3.....>1PSI to 5PSI 4.....>5PSI to 15PSI	Customer designated exact FSO

Example: 855D 5" 12D 0 (Model number 855, differential or gage type unit, pressure range of 0-5" WC, output signal of 1-5 VDC)

* With a gage application, one of the two pressure ports is vented to atmosphere

** Requires 18-24 VDC input

Note: This unit is not designed to support any capacitive load on the output. Please contact Controller Sensors LLC for additional installation guidance

controller
sensors

DS-855 Rev A

7638 Washington Ave S • Eden Prairie, MN • 55344
+1.800.735.8998 • +1.952.942.8743 • FAX +1.952.942.8753

www.controllersensors.com