

# Series 750

## Zero-Maintenance Pressure Transducer



### Features & Applications

- Lifetime stability of +/- 0.5% FSO
- Accuracy of +/- 0.75% FSO
- +/- 0.25% (accuracy) version available
- Perfect for critical applications such as clean rooms, filter pressure drop and hospital isolation rooms
- Exclusive, patented Auto-Zero
- No calibration or re-calibration necessary for the life of the device
- Pressure range calibrated to customer's specific requirement

### Specifications

Accuracy*:	+/-0.75% FSO +/- 0.25% FSO version available +/-1% at less than 1" WC
Stability:	+/-0.5% FSO – life of the device
Thermal Effects:	+/-0.01% FSO/°C
Overpressure:	14.5 PSI
Pressure Range:	0/0.1"WC to 0/5" WC (Bi-directional ranges available)
Compensated Range:	10° to 50°C
Adjustments:	Offset, 85% of FSO field adjustable
Media:	Any dry air or inert non-conductive gas
Operating Humidity:	90% RH non-condensing
Operating Temp:	-25° to 70°C
Input Supply:	24 VDC/24 VAC
Supply Power:	1 watt nominal, 1.5 watt peak
Load Resistance:	2KΩ minimum on voltage out, 500Ω, maximum loop resistance on 4-20mA output
Output Signal:	1-5VDC, 1-6VDC, 1-10VDC or 4-20mA
Electrical Connections:	22 AWG 3-conductor cable
Pressure Connections:	Brass barbed fitting for 1/8" ID tubing
Enclosure:	Impact resistant ABS plastic
Dimensions:	Approx. 3.0" x 1.5" x 4.3" (7.6cm x 3.8cm x 10.9cm)

\* Includes non-linearity hysteresis and non-repeatability at a fixed temperature

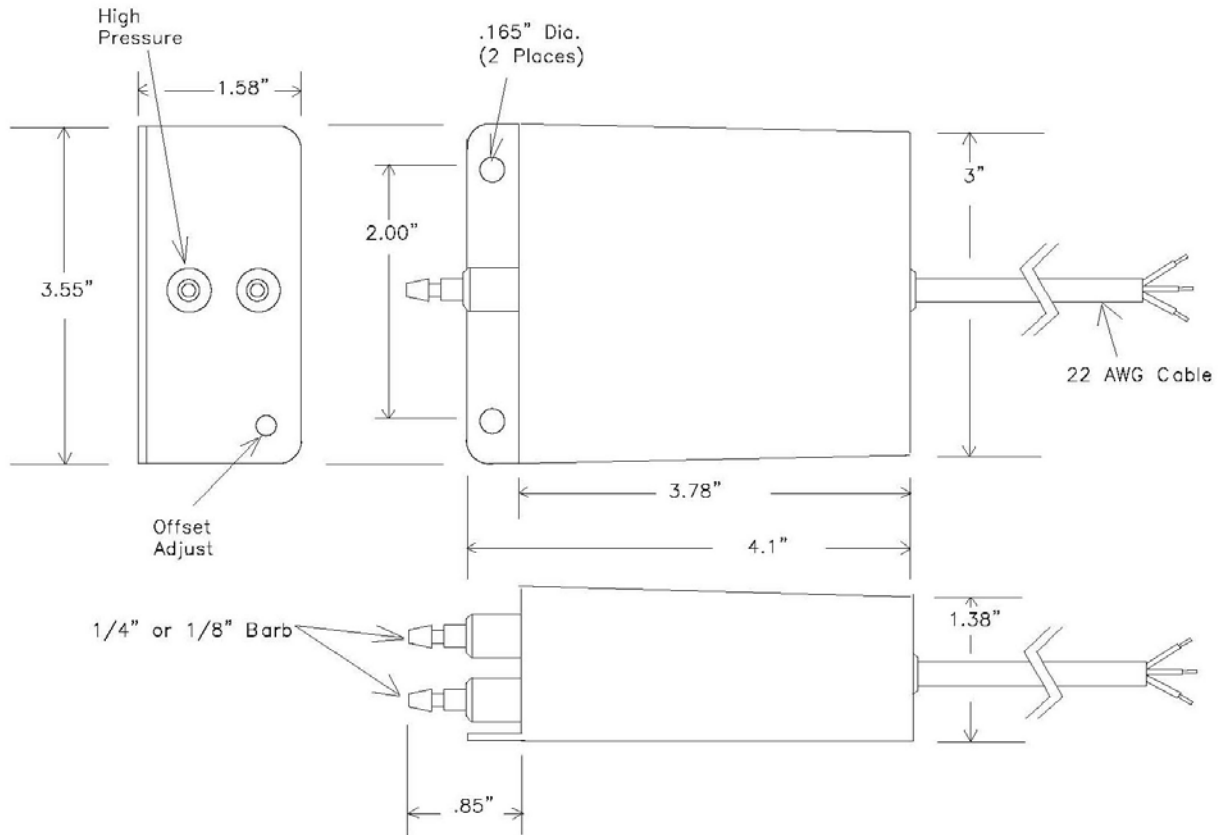
Note: Controller Sensors LLC reserves the right to make changes at any time to any products herein. Controller Sensors LLC does not assume any liability arising out of the application or use of any product described herein, neither does it convey any license under its patent rights nor the rights of others.

**controller**  
sensors

DS-750 Rev B

7638 Washington Ave S • Eden Prairie, MN • 55344  
+1.800.735.8998 • +1.952.942.8743 • FAX +1.952.942.8753  
www.controllersensors.com

## Physical Drawing



## How to Order

A typical order number consists of the **model number**, **type**, **output signal** and **calibration pressure**.

<u>Model</u>	<u>Type</u>	<u>Output Signal</u>	<u>Calibration Pressure</u>
750	D = Differential Or Gage*	1-5 VDC 1-6 VDC 1-10 VDC 4-20mA Custom Output	Customer designated exact FSO

*Example: 750D 4-20mA Cal Pressure = 0-1.5"WC* (Model number 750, differential type unit, output signal of 4-20mA, pressure range of 0-1.5"WC)

\*With a gage application, one of the two pressure ports is vented to atmosphere

### Optional Items

1. +/- 0.25% FSO accuracy version available for pressure ranges from 0/0.5"WC to 0/5"WC.
2. +/- 0.5% FSO accuracy version available for pressure ranges 0/0.1"WC to 0/0.5"WC.
3. Remaining specifications unchanged from standard accuracy version.