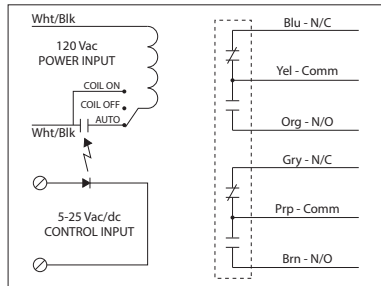


**LOW COIL INPUT RELAYS**

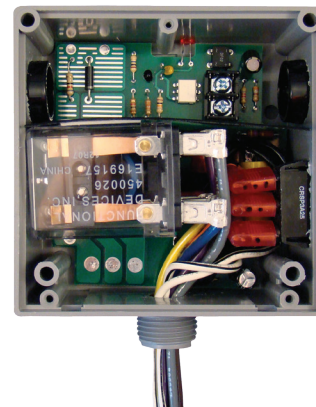
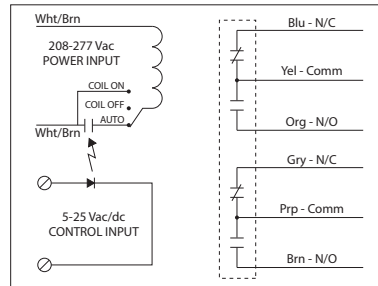
**RIBTE01P-S**

Enclosed Relay Hi/Low Separation 20 Amp DPDT +Override, 120 Vac Power Input + 5-25 Vac/dc Control Input



**RIBTE02P-S**

Enclosed Relay Hi/Low Separation 20 Amp DPDT +Override, 208-277 Vac Power Input + 5-25 Vac/dc Control Input



RELAYS

**SPECIFICATIONS**

**Power Input:** 120 Vac, 50-60 Hz (RIBTE01P-S)  
208-277 Vac, 50-60 Hz (RIBTE02P-S)

**Control Input:** 5-25 Vac/dc, 50-60 Hz

**# Relays & Contact Type:** One (1) DPDT Continuous Duty Coil

**Expected Relay Life:** 10 million cycles minimum mechanical

**Operating Temperature:** -30 to 140° F

**Humidity Range:** 5 to 95% (noncondensing)

**Operate Time:** 18ms

**Relay Status:** LED On = Activated

**Dimensions:** 4.00" x 4.00" x 1.80" with .50" NPT Nipple

**Wires:** 16", 600V Rated

**Approvals:** UL Listed, UL916, UL864, C-UL  
California State Fire Marshal, CE, RoHS

**Housing Rating:** UL Accepted for Use in Plenum, NEMA 1

**Gold Flash:** Yes

**Override Switch:** Yes\*

**Contact Ratings:**

- 20 Amp Resistive @ 300 Vac
- 20 Amp Resistive @ 28 Vdc
- 15 Amp Resistive @ 600 Vac
- 20 Amp Ballast @ 277-480 Vac
- Not rated for Electronic Ballast
- 770 VA Pilot Duty @ 120 Vac
- 1158 VA Pilot Duty @ 240 Vac
- 1110 VA Pilot Duty @ 277 Vac
- 1640 VA Pilot Duty @ 480 Vac
- 3 HP @ 480-600 Vac
- 2 HP @ 240-277 Vac
- 1 HP @ 120 Vac

**Control Input Ratings:**

- .4 mA @ 5 Vdc
- .9 mA @ 10 Vdc
- 1 mA @ 12 Vdc
- 2 mA @ 24 Vdc
- 3 mA @ 24 Vac (Non Polarized)

**Power Input Ratings:**

- 105 mA @ 120 Vac (RIBTE01P-S)
- 105 mA @ 208-277 Vac (RIBTE02P-S)

**Notes:**

- Override capability is made possible by supplying constant voltage on the Power Input. No Control Input Voltage is necessary to override the relay. \*