

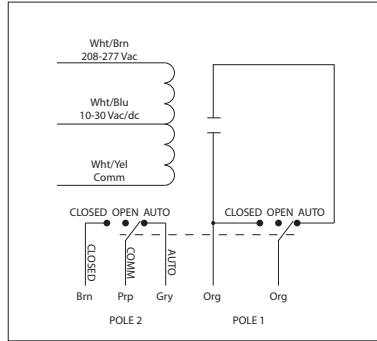
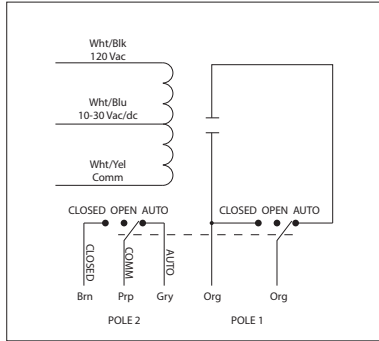
**10 AMP PILOT CONTROL RELAYS**

**RIBU1SM-250**

Enclosed Relay 10 Amp SPST-N/O + Override  
+ Monitor with 10-30 Vac/dc/**120 Vac Coil**

**RIBH1SM-250**

Enclosed Relay 10 Amp SPST-N/O + Override  
+ Monitor with 10-30 Vac/dc/**208-277 Vac Coil**



RELAYS

**SPECIFICATIONS**

- # Relays & Contact Type:** One (1) SPST Continuous Duty Coil
- Expected Relay Life:** 10 million cycles minimum mechanical
- Operating Temperature:** -30 to 140° F
- Humidity Range:** 5 to 95% (noncondensing)
- Operate Time:** 20ms
- Relay Status:** LED On = Activated
- Dimensions:** 2.30" x 3.20" x 1.80" with .50" NPT nipple
- Wires:** 16", 600V Rated
- Approvals:** UL Listed, UL916, UL864, C-UL  
California State Fire Marshal, CE, RoHS
- Housing Rating:** UL Accepted for Use in Plenum, NEMA 1
- Gold Flash:** Yes
- Override Switch:** Yes + Monitor

- Contact Ratings:**  
10 Amp Resistive @ 120/250 Vac  
345 VA Pilot Duty @ 120/240 Vac  
211 VA Pilot Duty @ 120/240 Vac  
1/3 HP @ 120-240 Vac (N/O)  
1/6 HP @ 120-240 Vac (N/C)

- Coil Current:**  
55 mA @ 30 Vac  
28 mA @ 120 Vac (RIBU1SM-250)  
39 mA @ 208-277 Vac (RIBH1SM-250)  
20 mA @ 30 Vdc

- Coil Voltage Input:**  
10-30 Vac/dc ; 120 Vac ; 50-60 Hz (RIBU1SM-250)  
10-30 Vac/dc ; 208-277 Vac ; 50-60 Hz (RIBH1SM-250)  
Drop Out = 2.1 Vac / 2.8 Vdc  
Pull In = 9 Vac / 10 Vdc

- Notes:**
  - Second pole of override switch can be connected to digital-in of controller to report position of override switch
  - Rating of second pole is 250 Vac max and 5 Amp max
  - Order Normally Closed by adding "-NC" to end of model number