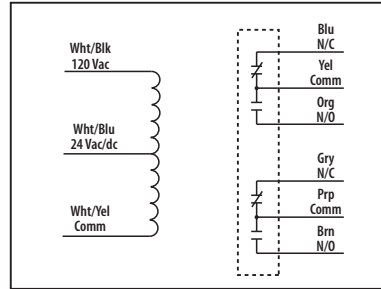




10 Amp Pilot Control Relays

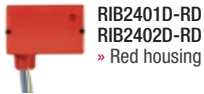
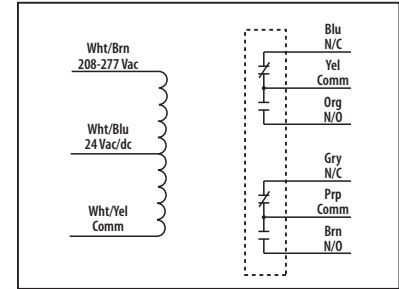
RIB2401D

Enclosed Relay 10 Amp DPDT with
 24 Vac/dc/120 Vac



RIB2402D

Enclosed Relay 10 Amp DPDT with
 24 Vac/dc/208-277 Vac



RIB2401D-RD
 RIB2402D-RD
 » Red housing



RIB2401D-N4
 RIB2402D-N4
 » NEMA 4X housing
 » UL508 only

SPECIFICATIONS

Relays & Contact Type: One (1) DPDT Continuous Duty Coil
 Expected Relay Life: 10 million cycles minimum mechanical
 Operating Temperature: -30 to 140° F
 Operate Time: 8mS
 Relay Status: LED On = Activated
 Dimensions: 1.70" x 2.80" x 1.50" with .50" NPT nipple
 Wires: 16", 600V Rated
 Approvals: UL Listed, UL916, UL864, C-UL
 California State Fire Marshal, CE, RoHS
 Housing Rating: Plenum, NEMA 1
 Gold Flash: No
 Override Switch: No

Contact Ratings:
 10 Amp Resistive @ 30 Vdc
 10 Amp General Use @ 277 Vac
 1/2 HP for N/O @ 120/240 Vac
 1/3 HP for N/C @ 120/240 Vac
B300 Pilot Duty
 120 Vac 30A Make 3A Break (360 VA)
 240 Vac 15 A Make 1.5A Break (360 VA)
 208 Vac 17.3A Make 1.73A Break (360 VA)
 277 Vac 13A Make 1.3A Break (360 VA)
 24 Vac 30A Make 5A Break (120VA) 5A Max

Coil Current:
 24 mA @ 18 Vac 20 mA @ 20 Vdc
 32 mA @ 24 Vac 24 mA @ 24 Vdc
 40 mA @ 30 Vac 36 mA @ 30 Vdc
 31 mA @ 120 Vac (RIB2401D)
 36 mA @ 208-277 Vac (RIB2402D)

Coil Voltage Input:
 24 Vac/dc ; 120 Vac ; 50-60 Hz (RIB2401D)
 24 Vac/dc ; 208-277 Vac ; 50-60 Hz (RIB2402D)
 Drop Out = 3 Vac / 3.8 Vdc
 Pull In = 18 Vac / 20 Vdc

Notes