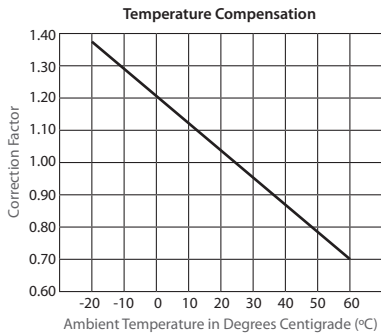


PREPACKAGED CIRCUIT BREAKER SWITCHES

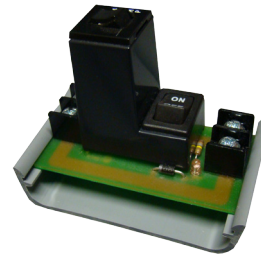
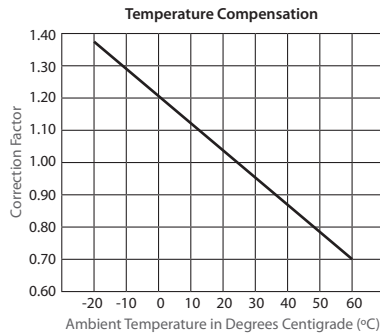
PSMN01S SERIES

2.75" Track Mount Switch, 2 Position Maintained, On/Off, Circuit Breaker, 120 Vac



PSMN24S SERIES

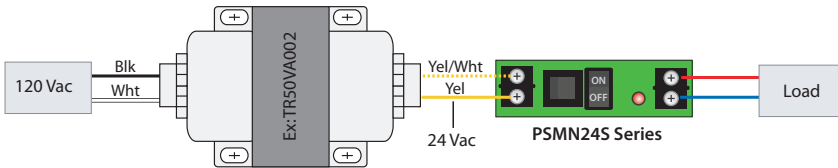
2.75" Track Mount Switch, 2 Position Maintained, On/Off, Circuit Breaker, 24 Vac



SPECIFICATIONS

- Operating Temperature:** -30 to 140° F
- Humidity Range:** 5 to 95% (noncondensing)
- Circuit Breaker:** 4 Amp and 10 Amp
- Dimensions:** 2.750" x 1.350" x 2.061"
- Track Mount:** MT212-2 Mounting Track Provided
- Approvals:** UL Listed, UL916, C-UL

OVER CURRENT / SHORT CIRCUIT PROTECTION AND SWITCHING



PSMN01S SERIES

| Model # | Circuit Breaker |
|------------|-----------------|
| PSMN01SB4 | 4 Amps |
| PSMN01SB10 | 10 Amps |

PSMN24S SERIES

| Model # | Circuit Breaker |
|------------|-----------------|
| PSMN24SB4 | 4 Amps |
| PSMN24SB10 | 10 Amps |

POWER CONTROL