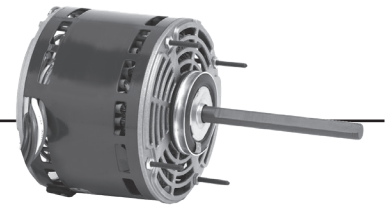


# Permanent Split Capacitor Direct Drive Fan & Blower

## 5.6" Diameter, Open Air Over, High Efficiency

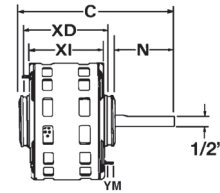


### APPLICATIONS:

Designed to meet manufacturer's requirements for use on direct drive fans and blowers.

### FEATURES:

- Reversible Rotation (Unless Otherwise Noted)
- Class B Insulation
- Bearings Have All Angle Thrust System
- Continuous Duty, Air Over
- Designed For Use With 370V Capacitors
- 36" Line Leads Unless Otherwise Noted
- High Efficiency Economizer® Motors
- Automatic Reset Thermal Overload Protector
- Connection & Capacitor Information Furnished in Nameplate Data
- When Furnished, The Capacitor And Its Mounting Hardware Is Supplied Detached
- 2.5" Diameter Hub Rings Included - See Notes
- **Discount Symbol: DS-3HAC**



### Stud or Hub Ring Mount (2.5"), Single Speed

HP	RPM/ Spds.	Voltage	Catalog Number	List	Bearings	Cap MFD	Amps	Shaft N	Base XD	Shell XI	Total C	Stud YM	Ship Wt.	Notes	OEM
1/4	1100	208-230	3403	\$182	SAB	5.0	1.8	1.5	N/A	3.96	5.96	N/A	10		
	1100	208-230	CA3408	\$107	SAB	5.0	1.5	3.5	N/A	4.06	7.56	N/A	10		
1/3	825	208-230	6873	\$267	Ball	5.0	2.7	4.5	6.4	5.8	11.4	N/A	23	H10	

### Stud or Hub Ring Mount (2.5"), Two Speed

HP	RPM/ Spds.	Voltage	Catalog Number	List	Bearings	Cap MFD	Amps	Shaft N	Base XD	Shell XI	Total C	Stud YM	Ship Wt.	Notes	OEM
1/4	1625/2	460	8944	\$412	Ball	5.0	0.8	6.0	N/A	4.6	10.6	0.8	19		
	1075/2	115	3197	\$166	SAB	5.0	3.9	5	5.4	4.9	10.4	0.8	12		
1/3	1075/2	460	8945	\$472	Ball	5.0	1.3	6.0	5.3	4.8	11.9	0.8	18	64	
	1075/2	208-230	CA3410	\$122	SAB	4.0	2.5	3.0	N/A	4.3	7.3	N/A	11		
1/2	825/2	230	3183	\$324	SAB	10.0	3.9	4.0	N/A	5.6	10.7	0.8	23		
3/4	1075/2	460	8947	\$504	Ball	20.0	2.2	6.0	6.1	5.6	12.7	0.8	19	64	

### Stud or Hub Ring Mount (2.5"), Three Speed

HP	RPM/ Spds.	Voltage	Catalog Number	List	Bearings	Cap MFD	Amps	Shaft N	Base XD	Shell XI	Total C	Stud YM	Ship Wt.	Notes	OEM
3/4	1075/3	208-230	8066	\$225	SAB	10.0	4.5	2.5	5.6	5.1	8.7	N/A	18		
1	1100/3	460	2553	\$401	SAB	25.0	3.3	3.5	-	6.8	10.3	N/A	23	62, H11	YK

### Four Speed

HP	RPM/ Spds.	Voltage	Catalog Number	List	Bearings	Cap MFD	Amps	Shaft N	Base XD	Shell XI	Total C	Stud YM	Ship Wt.	Notes	OEM
1/6	1075/4	115	5825	\$140	SAB	4.0	2.2	6.0	4.6	4.1	11.1	1.5	12	H1	
	1075/4	208-230	5826	\$141	SAB	5.0	1.1-1.0	6.0	4.6	4.1	11.1	1.5	18	H1	
1/4	1075/4	115	5830	\$141	SAB	5.0	3.8	6.0	4.9	4.4	11.4	1.5	13	H1	
	1075/4	208-230	5831	\$145	SAB	5.0	1.8-1.7	6.0	4.9	4.4	11.4	1.5	13	H1	
1/3	1075/4	115	5835	\$159	SAB	7.5	4.6	6.0	5.4	4.9	11.9	1.5	16	H1	
	1075/4	208-230	5836	\$160	SAB	6.0	2.3-2.2	6.0	5.2	4.7	11.7	1.5	14	H1	
1/2	1075/4	115	5840	\$171	SAB	7.5	7.1	6.0	5.8	5.3	12.4	1.5	17	H1	
	1075/4	208-230	5841	\$183	SAB	7.5	3.3-3.1	6.0	5.6	5.1	12.2	1.5	17	H1	
3/4	900/4	115	1125	\$289	SAB	10.0	11.9	4.0	-	6.6	10.6	-	24	62, H11	IC
	1075/4	115	5845	\$227	SAB	15.0	10.6	6.0	6.2	5.7	12.7	1.5	20	H1	
	1075/5	115	3275	\$246	Ball	40.0	10.0	2.5	5.9	5.4	8.9	-	17	H2	LE
	1075/4	115	5463	\$272	Ball	15.0	10.6	5.0	-	5.8	10.8	-	20	62, 72	RH
	1075/4	208-230	5846	\$239	SAB	10.0	6.1-5.8	6.0	6.2	5.7	12.7	1.5	19	H1	
1	1100/4	208/230	4670	\$277	SAB	20.0	6.0	5.0	-	6.3	11.3	-	22	62,84,H9,H11	IC

IC = ICP    LE = Lennox    RH = Rheem    YK = York

### Five Speed

HP	RPM/ Spds.	Voltage	Catalog Number	List	Cap. MFD	Amps	Shaft N	Shell XI	Total C	Shaft Diameter	Rotation	Ship Wt.	Notes	OEM
3/4	1075/5	208-230	LX7924	\$356	20	4.6	2.5	-	8.9	0.500	CCWLE	17	-	

### Shaded Pole 5.0" Diameter

HP	RPM/ Spds.	Voltage	Catalog Number	List	Cap. MFD	Amps	Shaft N	Shell XI	Total C	Shaft Diameter	Rotation	Ship Wt.	Notes	OEM
1/8	1000/5	115	1161	\$132	5	2.3	5.1	4.3	9.4	0.500	CCWLE	8.3	-	UN

UN = Unilox®†

Note 64: Includes Capacitor Unmounted

Note 62: Not ECONOMIZER®

Note 72: Includes 4 Holes In Shell For Rheem Mount

Note 84: Non-Reversible

Note H1: 2.25" Dia. Hub Rings With Kit For 2.5" Included

Note H2: 2.5" Hub Rings

Note H10: 50" Line Leads

Note H11: Band Mount

Note H9: 5/8" Shaft